



# International Journal of PharmTech Research

"Quarterly Journal"  
(Effective from Oct 2016)

e-ISSN(Online):2455-9563,ISSN: 0974-4304 CODEN (USA): IJPRIF  
Open Access PEER REVIEWED MONTHLY Research Journal  
Co-published with Asian Publication Corporation

Home

PharmTech  
Home Page

"References Search":  
Enter any Key words

ENHANCED BY Google



## International Editorial Board

Managing Executive Editors(Dev, A & R)

1	<p><b>Editor-in-Chief:</b></p> <p><b>Dr. Men Zhu</b> Formulation Scientist, Verseon Corporation, 47071 Bayside Parkway Fremont, CA 94538, USA. 47071 Bayside Parkway, Fremont, California 94538, USA.</p> <p>Email: <a href="mailto:mzhu@verseon.com">mzhu@verseon.com</a> Phone: +1 (408) 769-9052 <a href="https://scholar.google.com/citations?user=w5lx4TEAAAJ&amp;hl=en">Google Scholar Profile</a>= <a href="https://scholar.google.com/citations?user=w5lx4TEAAAJ&amp;hl=en">https://scholar.google.com/citations?user=w5lx4TEAAAJ&amp;hl=en</a> <a href="https://www.researchgate.net/profile/Men_Zhu">ResearchGate Profile</a>= <a href="https://www.researchgate.net/profile/Men_Zhu">https://www.researchgate.net/profile/Men_Zhu</a></p>
Associate Editors	
2	<p><b>Dr. Rajendra B. Kakde</b> Professor, RTM Nagpur University Campus, Amravati Road, Nagpur-440010, Maharashtra, India</p> <p>Email: <a href="mailto:drkakde@yahoo.com">drkakde@yahoo.com</a> Phone: +919822711060 <a href="https://scholar.google.co.in/citations?user=p2U58YgAAAAJ&amp;hl=en">Google Scholar Profile</a>= <a href="https://scholar.google.co.in/citations?user=p2U58YgAAAAJ&amp;hl=en">https://scholar.google.co.in/citations?user=p2U58YgAAAAJ&amp;hl=en</a> <a href="https://www.researchgate.net/profile/Rajendra_Kakde">ResearchGate Profile</a>= <a href="https://www.researchgate.net/profile/Rajendra_Kakde">https://www.researchgate.net/profile/Rajendra_Kakde</a></p>
3	<p><b>Dr. Viraj H Mankar</b> At- Mankarwadi, Post- Kurawali, Tal- Indapur Dist- Pune Pin- 413104, MH, India</p> <p>Email: <a href="mailto:drmankarviraj@gmail.com">drmankarviraj@gmail.com</a> Phone: +91 9779282899 <a href="https://scholar.google.com/citations?user=U_CBn_AAAAAJ&amp;hl=en">Google Scholar Profile</a>= <a href="https://scholar.google.com/citations?user=U_CBn_AAAAAJ&amp;hl=en">https://scholar.google.com/citations?user=U_CBn_AAAAAJ&amp;hl=en</a> <a href="https://www.researchgate.net/profile/Viraj_Mankar">ResearchGate Profile</a>= <a href="https://www.researchgate.net/profile/Viraj_Mankar">https://www.researchgate.net/profile/Viraj_Mankar</a></p>
4	<p><b>Dr. Mahavir Chhajed</b> 532, Greater Brajeshwari, Near Agrawal Public School, Piplyahana, Indore (MP), Pin. – 452 016, India/ Indore Institute of Pharmacy, Rau-Pithampur Road, Opp. IIM, Indore, Rau, Indore, MP, India</p> <p>Email: <a href="mailto:mahavirchhajed@rediffmail.com">mahavirchhajed@rediffmail.com</a> Phone: 09300171071, 09479450505 <a href="https://scholar.google.co.in/citations?user=iJIKC1gAAAAJ&amp;hl=en">Google Scholar Profile</a>= <a href="https://scholar.google.co.in/citations?user=iJIKC1gAAAAJ&amp;hl=en">https://scholar.google.co.in/citations?user=iJIKC1gAAAAJ&amp;hl=en</a> <a href="https://www.researchgate.net/profile/Mahavir_Chhajed">ResearchGate Profile</a>= <a href="https://www.researchgate.net/profile/Mahavir_Chhajed">https://www.researchgate.net/profile/Mahavir_Chhajed</a></p>
5	<p><b>Juan Pablo Rodríguez Miranda</b> Distrital Francisco Jose de Caldas University. Faculty of Environment and Natural Resources. Bogota D.C. Colombia</p> <p>Email: <a href="mailto:jprm577@gmail.com">jprm577@gmail.com</a> Phone: +57 311 5319723 <a href="https://scholar.google.co.in/citations?user=-6YdmMEAAAJ&amp;hl=en">Google Scholar Profile</a>= <a href="https://scholar.google.co.in/citations?user=-6YdmMEAAAJ&amp;hl=en">https://scholar.google.co.in/citations?user=-6YdmMEAAAJ&amp;hl=en</a> <a href="https://www.researchgate.net/profile/Juan_Rodriguez_Miranda">ResearchGate Profile</a>= <a href="https://www.researchgate.net/profile/Juan_Rodriguez_Miranda">https://www.researchgate.net/profile/Juan_Rodriguez_Miranda</a></p>

6	<p><b>Dr. Praveen Kumar Sharma</b>  Lovely Professional University,  Phagwara, Jalandhar, Punjab  India.144411</p> <p>Email: pk_pandit1982@yahoo.com, praveen.14155@lpu.co.in  Phone: +91- 9023591664  Google Scholar Profile= <a href="https://scholar.google.com/citations?user=kjt9mXMAAAAJ&amp;hl=en">https://scholar.google.com/citations?user=kjt9mXMAAAAJ&amp;hl=en</a>  ResearchGate Profile= <a href="https://www.researchgate.net/profile/Dr_Praveen_Sharma">https://www.researchgate.net/profile/Dr_Praveen_Sharma</a></p>
7	<p><b>Rohit P Dugar.</b>  Formulation Research Scientist at <b>Nutriline</b> from Amway as a part of the functional product development team. Buena Park, CA, USA</p> <p>Email: rohit_dugar@ymail.com  Phone: 714-869-6691  Google Scholar Profile= <a href="https://scholar.google.com/citations?user=3nvi048AAAAJ&amp;hl=en">https://scholar.google.com/citations?user=3nvi048AAAAJ&amp;hl=en</a>  ResearchGate Profile= <a href="https://www.researchgate.net/profile/Rohit_Dugar">https://www.researchgate.net/profile/Rohit_Dugar</a></p>
8	<p><b>Dr. Ahmed A. Abd-Rabou</b>  Researcher (PhD holder), Medical Biochemistry and Cancer Biology, Medical Research Division, National Research Center (NRC), Egypt</p> <p>Email: <a href="mailto:ahmedchemia87@yahoo.com">ahmedchemia87@yahoo.com</a>  Phone: +2 01113334663  Google Scholar Profile= <a href="https://scholar.google.com/citations?user=9QSsaj8AAAAJ&amp;hl=en">https://scholar.google.com/citations?user=9QSsaj8AAAAJ&amp;hl=en</a>  ResearchGate Profile= <a href="https://www.researchgate.net/profile/Ahmed_Abd-Rabou">https://www.researchgate.net/profile/Ahmed_Abd-Rabou</a></p>

#### Executive Editors[A & R]

1	Dr. Fazlul Huq, Head Cancer Research Group, School of Medical Sciences, Faculty of Medicine, Australia.
2	Dr.Pavel Mokrejs, Thomas Bata University,The Czech Republic, Europe.
3	Dr. Adli Abdallah Hanna, National Research Centre, Egypt.
4	Dr. P.Y.Shirodkar, University of Mumbai,India.
5	Dr. M. Al-Anber, Mu'tah University, Jordan.
6	Dr.Saeid Amani, Arak University,Iran .
7	Dr.Mitu Liviu, University of Pitesti, Romania.
8	Dr. Nurfina Aznam, University Negeri Yogyakarta, Indonesia.
9	Dr. Tomasz Borowski, Centre Lab of Chem.Tech.,Poland.
10	Dr. Mas Rosemal Hakim bin Mas Haris, School of Chemical Sciences Universiti Sains Penang, Malaysia.
11	Dr.Alamdar Ashnagar, Pasteur Institute of Iran.
12	Dr. Abdulkareem Ismaiel Abdulraheem, College of Health Sc.,PAAET, Kuwait.
13	Dr. Ji-Tai Li, Hebei University, China.
14	Dr.Abdalla Shalaby, Zigzag University,Egypt
15	Dr. Georgia Koliopoulou,



Vol. 10, No.02, 2017

**PharmTech**

**International Journal of PharmTech Research**

CODEN (USA): IJPRIF ISSN : 0974-4304 ISSN(Online): 2455-9563

This website is best viewed in 1024 x 768

INDEX Page-1.

S.N.(Page Numbers)	Title of Paper and Names of Authors			
(62-68)	<b>BioAnalysis:</b>			
	Solid Phase Extraction-HPLC Method for Determination and Pharmacokinetic Study of Garenoxacin in Rat Plasma after Oral Administration			
	Rajendra B. Kakde, Krutika Warthi, Rahul P. Chilbule			
	<a href="#">Abstract</a>	<a href="#">Full Text PDF</a>	<a href="#">Full Text XML</a>	
DOI: <a href="http://dx.doi.org/10.20902/IJPTR.2017.1019">http://dx.doi.org/10.20902/IJPTR.2017.1019</a>				
(69-73)	Effect of Curcumin in Decreasing MDA Level in Preeclampsia-Induced Human Umbilical Vein Endothelial Cell (HUVEC)			
	Cut Meurah Yeni, Prima Nanda Fauziah, Ani Melani Maskoen, Rovina Ruslami, Johannes Mose			
	<a href="#">Abstract</a>	<a href="#">Full Text PDF</a>	<a href="#">Full Text XML</a>	
	DOI: <a href="http://dx.doi.org/10.20902/IJPTR.2017.10110">http://dx.doi.org/10.20902/IJPTR.2017.10110</a>			
(74-82)	Polytene Chromosome aberrations based Genotoxicity evaluation of Dichlorvos insecticide using Drosophila malenogaster			
	Lovleen* and Ishrat Kashafi			
	<a href="#">Abstract</a>	<a href="#">Full Text PDF</a>	<a href="#">Full Text XML</a>	
	DOI: <a href="http://dx.doi.org/10.20902/IJPTR.2017.10111">http://dx.doi.org/10.20902/IJPTR.2017.10111</a>			
(83-88)	Acute Toxicity of Self Nano-emulsifying Formulation of Curcumin Analogue Gamavuton-0, A New Candidate for Rheumatoid Arthritis Treatment			
	L Chabib, Z Ikawati, R Martien, H Ismail			
	<a href="#">Abstract</a>	<a href="#">Full Text PDF</a>	<a href="#">Full Text XML</a>	
	DOI: <a href="http://dx.doi.org/10.20902/IJPTR.2017.10112">http://dx.doi.org/10.20902/IJPTR.2017.10112</a>			
(89-95)	Anti-tubercular activity and mutagenicity of bioactive compounds in culture broth (CBPs) of Streptomyces lydicus A2			
	Monthon Lertcanawanichakul, Kittisak Chawawisit, Nattida Damnadee, Natnithi Thiengtham and Nisarath Rittirak			
	<a href="#">Abstract</a>	<a href="#">Full Text PDF</a>	<a href="#">Full Text XML</a>	
	DOI: <a href="http://dx.doi.org/10.20902/IJPTR.2017.10113">http://dx.doi.org/10.20902/IJPTR.2017.10113</a>			

(96-102)	Optimization of Pyrosequencing Method to Detect IVS1-NT5 $\beta$ -Globin Gene Mutation in $\beta$ -Thalassemia			
	Ani Melani Maskoen, Dina Sofiana, Lelani Reniarti			
	<a href="#">Abstract</a>	<a href="#">Full Text PDF</a>	<a href="#">Full Text XML</a>	
	DOI: <a href="http://dx.doi.org/10.20902/IJPTR.2017.10114">http://dx.doi.org/10.20902/IJPTR.2017.10114</a>			
(103-108)	Effect of Lycopene on Level of Malondialdehyd (MDA) in Preeclampsia-Induced Placental Trophoblast Cells			
	Vaulinne Basyir, Prima Nanda Fauziah, Yanwirasti, Johaness C. Mose, Fadil Oenzil			
	<a href="#">Abstract</a>	<a href="#">Full Text PDF</a>	<a href="#">Full Text XML</a>	
	DOI: <a href="http://dx.doi.org/10.20902/IJPTR.2017.10115">http://dx.doi.org/10.20902/IJPTR.2017.10115</a>			
(109-113)	Effect of Cryopreservation and cumulative population doublings on Senescence of Umbilical Cord Mesenchymal Stem Cells			
	Jeanne Adiwinata Pawitan, Noviyanti Goei, Isabella Kurnia Liem, <u>Dian Mediana</u>			
	<a href="#">Abstract</a>	<a href="#">Full Text PDF</a>	<a href="#">Full Text XML</a>	
	DOI: <a href="http://dx.doi.org/10.20902/IJPTR.2017.10116">http://dx.doi.org/10.20902/IJPTR.2017.10116</a>			
(114-119)	<b>BioAnalysis:</b>			
	Determination of Enantiomeric Methylphenidate in Human Plasma by High Performance Liquid Chromatography			
	José M.M. Batista, Livia A.F. Guimarães, Janete E.S. Soares, Marta M.F. Fonteles, Teresa M.J.P. Carvalho			
	<a href="#">Abstract</a>	<a href="#">Full Text PDF</a>	<a href="#">Full Text XML</a>	
(120-130)	A Proliferation and surface marker characterization of adipose stem cells after culture in various processed outdated platelet lysate containing media			
	Puji Sari, Evah Luviah, Reza Yuridian Purwoko, Jeanne Adiwinata Pawitan			
	<a href="#">Abstract</a>	<a href="#">Full Text PDF</a>	<a href="#">Full Text XML</a>	
	DOI: <a href="http://dx.doi.org/10.20902/IJPTR.2017.10118">http://dx.doi.org/10.20902/IJPTR.2017.10118</a>			

See discussions, stats, and author profiles for this publication at: <https://www.researchgate.net/publication/317599882>

# Effect of Cryopreservation and cumulative population doublings on Senescence of Umbilical Cord Mesenchymal Stem Cells

Article in *International Journal of PharmTech Research* · April 2017

DOI: 10.20902/IJPTR.2017.10116

CITATIONS

7

READS

360

4 authors, including:



Jeanne Pawitan

University of Indonesia

184 PUBLICATIONS 1,391 CITATIONS

SEE PROFILE



Isabella Liem

University of Indonesia

71 PUBLICATIONS 493 CITATIONS

SEE PROFILE



Dian Mediana

Trisakti University

19 PUBLICATIONS 55 CITATIONS

SEE PROFILE

## Effect of Cryopreservation and cumulative population doublings on Senescence of Umbilical Cord Mesenchymal Stem Cells

Jeanne Adiwinata Pawitan<sup>1,2\*</sup>, Noviyanti Goei<sup>3,4</sup>, Isabella Kurnia Liem<sup>1,5</sup>,  
Dian Mediana<sup>3,4</sup>

<sup>1</sup>Stem Cell Medical Technology Integrated Service Unit, Cipto Mangunkusumo Central Hospital - Faculty of Medicine Universitas Indonesia, Jakarta, Indonesia

<sup>2</sup>Department of Histology, Faculty of Medicine Universitas Indonesia, Jakarta, Indonesia

<sup>3</sup>Biomedical Master program, Faculty of Medicine Universitas Indonesia, Jakarta, Indonesia

<sup>4</sup>Department of Anatomy, Faculty of Medicine Universitas Trisakti, Jakarta, Indonesia

<sup>5</sup>Department of Anatomy, Faculty of Medicine Universitas Indonesia, Jakarta, Indonesia

**Abstract : Background:** Multiple harvest explant method (MHEM) derived umbilical cord mesenchymal stem cells (UC-MSCs) was shown to undergo senescent beginning at passage-10 (P-10). However, for the same cells, there are no senescent data after cryopreservation and passage. Therefore, this study aimed to analyze the senescent profile of cryopreserved MHEM derived UC-MSCs after serial passages.

**Methods:** MHEM derived UC-MSCs were isolated and cultured in platelet lysate (PL) containing medium as described previously. The cells were cryopreserved at passage-1 (P-1) in 10% dimethyl sulfoxide (DMSO) and 10% PL containing alpha minimal essential medium ( $\alpha$ MEM). Cell density at cryopreservation was 500 000 cells/mL. After one month, the cells were thawed and recultured until P-8 in six 12-well plate. At 80-90% confluent, two wells were harvested and the cells were recultured into six wells, and the four remaining wells were subjected to senescent ( $\beta$ -galactosidase) staining, which was done for all passages. Random photographs were taken from all stained wells, and senescent percentage was recorded.

**Results:** No senescent cells were observed at P-2. Senescent cells began to appear at P-3. Percentage (mean  $\pm$  SD) of senescent cells from P-3 through P-8 were  $0.04 \pm 0.02$ ,  $1.18 \pm 1.82$ ,  $0.14 \pm 0.18$ ,  $0.49 \pm 0.00$ ,  $0.58 \pm 0.91$ , and  $0.07 \pm 0.07$ , respectively.

**Results:** No senescent cells were observed at P-2. Senescent cells began to appear at P-3. Percentage (mean  $\pm$  SD) of senescent cells from P-3 through P-8 were  $0.04 \pm 0.02$ ,  $1.18 \pm 1.82$ ,  $0.14 \pm 0.18$ ,  $0.49 \pm 0.00$ ,  $0.58 \pm 0.91$ , and  $0.07 \pm 0.07$ , respectively.

**Conclusion:** No senescent cells were observed at P-2 (cumulative population doubling [CPD]  $> 9.38$ ). Senescent cells began to appear at P-3 (CPD  $> 14.06$ ), but in all passages until P-8 (CPD  $> 34.34$ ) the senescent percentage was below 5%.

**Keywords:** MSC, umbilical cord, cryopreservation, passage, senescence.



## Introduction

Stem cells whether in the form of a crude mixture after isolation, expanded *in vitro* or differentiated into functional cells have been shown potential to cure various kind of diseases.<sup>1-3</sup> Moreover, mesenchymal stem cells are increasingly used in various clinical trials and have showed promising results.<sup>4-6</sup> However, *in vitro* over expansion to provide enough number of cells, and cryopreservation to meet the need of ready to use cells might compromise cell quality. A review on the failure of phase III clinical trial, which used over expanded cryopreserved mesenchymal stem cells to cure steroid resistant graft versus host disease, supposed that the failure was due to impaired immunomodulatory functions due to cryopreservation, and senescence due to overexpansion.<sup>7, 8</sup> Therefore, for patients' safety and prospective comparisons between trial results, cells need to be characterized, and their function and senescent profile need to be analyzed.

Multiple harvest explant method (MHEM) derived umbilical cord mesenchymal stem cells (UC-MSCs) were shown to undergo senescent beginning at passage-10 (P-10), but until P17, the senescent percentage was below 5%.<sup>9</sup> Since for MHEM UCMSCs there are no senescent data after cryopreservation, this study aimed to analyze the senescent profile of cryopreserved MHEM derived UC-MSCs after serial passages. Cumulative population doublings were computed for every passages to provide comparison measures with other previous and future studies.

## Materials and Methods

This was an *in vitro* observational study that was done June April 2014 through January 2015, in Stem Cell Medical Technology Integrated Service Unit, Cipto Mangunkusumo Central Hospital - Faculty of Medicine Universitas Indonesia. Ethical approval was obtained from the Ethical Committee of the Faculty of Medicine, Universitas Indonesia (ethical clearance No. 665/UN2.F1/ETIK/2014).

MHEM derived UC-MSCs were isolated and cultured in platelet lysate (PL) containing medium as described previously,<sup>10</sup> and were proven to be MSCs by their property that attached to plastics, by their surface markers, and ability to differentiate into chondrogenic, osteogenic and adipogenic lineages. The cells were cryopreserved at passage-1 (P-1) in 10% dimethyl sulfoxide (DMSO) and 10% PL containing alpha minimal essential medium ( $\alpha$ MEM). Cell density at cryopreservation was 500,000 cells/mL, and cryopreservation procedure was done at -20°C for 24 hours, and then moved into liquid N<sub>2</sub> tank, vapor phase as described previously.<sup>11</sup> After one month, the cells were thawed and subjected to serial passages until P-8, and senescent analysis was done for all passages.

### Thawing and serial passages

Thawing was done as quick as possible as described previously.<sup>11</sup> In brief, the cryotubes were immersed in a 37°C water bath. After that, the cells were transferred into a complete medium, washed, and viable and total cells were counted by trypan blue exclusion method. For all passages, the cells were plated in six wells of a 12-well plate with a seeding density of 5000 viable cells/cm<sup>2</sup>. Upon 80-90% confluent, two wells were harvested and the cells were re-cultured into six wells, and the four remaining wells were subjected to senescent ( $\beta$  galactosidase) staining (Sigma Cat. no CS0030) as described previously.<sup>9</sup>

### Senescent analysis

Five random photographs of all stained wells were taken using an inverted microscope connected to a digital camera, and senescent percentage from each well was recorded. As the total number of cells at 80-90% confluence was difficult to count, only senescent cells were counted, and total number of cells was interpolated using the area of photograph, area of the well, and mean value of total count from the two harvested wells.

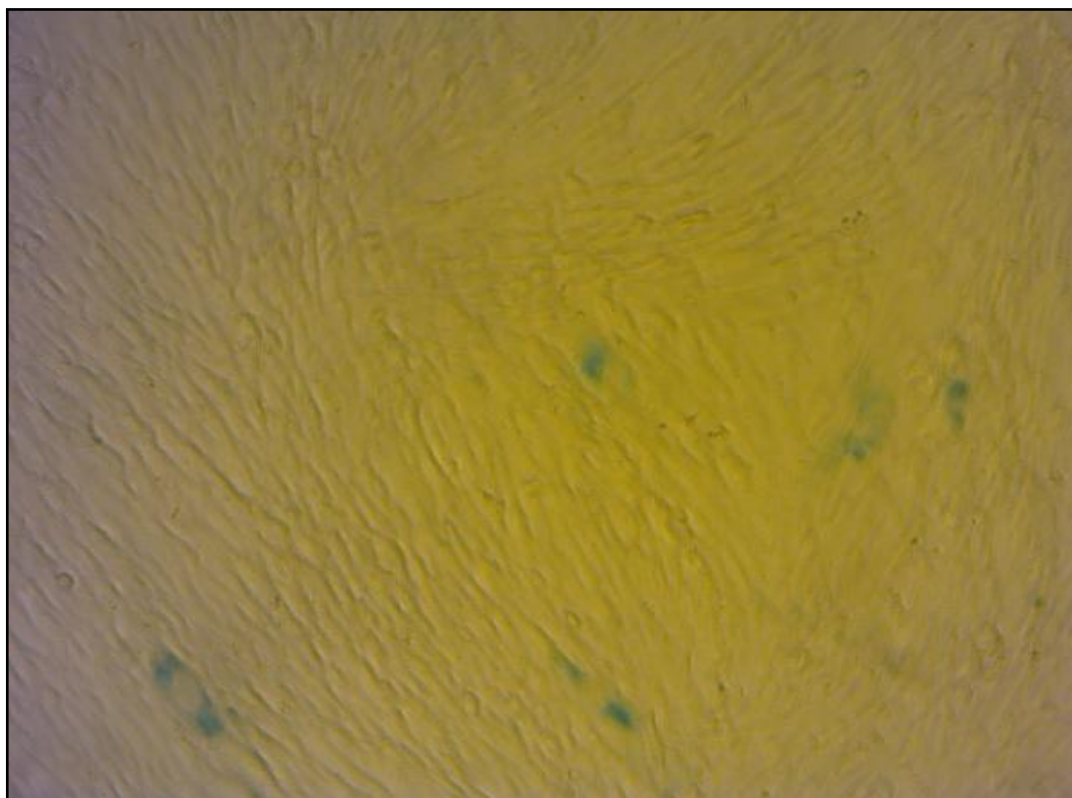
### Data collection and processing

Data collected were numbers of harvested cells from the two wells from all passages, and numbers of stained cells in the photographs. Observation and data collection of senescent cell number were done in clear and sharp photograph. The data were tabulated according to the passage and well number. The percentages of

senescent cells, and mean and standard deviation (SD) value of the senescent cells in all passages were computed. Further, cumulative population doublings at P-3 through P-8 were computed.

## Results

Viability after thawing following cryopreservation was 80%. However, reculture after thawing showed that most cells were floating and only few cells were attached the next day, much fewer compared to passages of fresh cells after harvest. Floating cells were eliminated after medium change. Reculture after thawing took longer time to become confluent compared to passages of fresh cells. Population doubling at P-1, P-2, and P-3 was 4.11, 5.27, and 4.68 respectively



**Figure 1. Microphotograph of cells in a P-3 well with non senescent and five senescent cells Senescent ( $\beta$  galactosidase) staining (Sigma Cat. no CS0030), blue color indicate a senescent cell, magnification 100x**

No senescent cells were observed at P-2. Senescent cells began to appear at P-3 (Figure 1). Some of the wells that were intended to be stained were over confluent, and were detached after fixation. Further, some photographs were not sharp, so that they could not be analyzed. Therefore, the number of photographs that was analyzed for senescent cells numbers was incomplete. The number of photograph that were analyzed, mean and standard deviation (SD) of percentage of senescent cells, and cumulative population doubling (CPD) from P-3 through P-8 is shown in Table 1.

**Table 1. Percentage of senescent cells, number of analyzed photographs, and CPDs in P-3 through P-8**

	P-3	P-4	P-5	P-6	P-7	P-8
Mean	0.04	1.18	0.14	0.46	0.58	0.07
SD	0.02	1.82	0.18	NA	0.91	0.07
n	12	4	18	1	16	15
CPD	14.06	16.75	21.18	26.40	29.55	34.34

P-= passage-, CPD= cumulative population doublings, SD=standard deviation, NA= not applicable, n= number of analyzed photographs



## Discussion

A study showed an increase in cell size with increasing passage, which was supposed to be due to senescence,<sup>12</sup> and another study that compared the size of senescent and non-senescent cells suggested that a non senescent cell should have a size that is less than 2602  $\mu\text{m}^2$ .<sup>9</sup> Our previous result showed that serial passages after cryopreservation in the same method as this research caused enlargement of cell size at P-2 compared to fresh cells (mean value 2674 vs 2056  $\mu\text{m}^2$ ),<sup>11</sup> though this study showed that in P-2 there was no senescent cells. Therefore, after cryopreservation, P-2 cells in this study might begin the senescent process, but had not accumulated enough  $\beta$  galactosidase to be detected with  $\beta$  galactosidase staining, which in our study, began to detect senescence in P-3.

Our results showed a non steady increase in senescent percentage from P-3 to P-8, which showed that senescent percentages in P-5 and P-8 were lower than P-4 and P-7 respectively (Table 1). This fact might be due to the timing of senescent staining, which was the limitation of our study. Staining at 80% confluence, might give different result compared with at 90% or when the cultures were over confluence. The more confluence the culture, the more are the contacts between cells, which cause contact inhibition. Contact inhibition and serum starvation due to confluent culture may lead to quiescence, and increase in lysosomal activation and hence increased  $\beta$  galactosidase activity. Therefore,  $\beta$  galactosidase positive staining might represent senescent or quiescent cells.<sup>13</sup> In our study, we used  $\beta$  galactosidase staining at pH 6 to detect senescence associated  $\beta$  galactosidase activity, which can distinguish senescent from quiescent cells. Quiescent cells due to confluent culture may show weaker  $\beta$  galactosidase staining, which disappeared after re-culture.<sup>14</sup> Moreover, it has been postulated that contact inhibition suppressed senescence.<sup>13</sup>

To be used for patients, MSCs should be non senescent and functional. Therefore, over expansion should be avoided. Moreover, allogeneic MSCs are usually cryopreserved to match the timing of patient need and availability of cells. Cryopreservation and thawing may cause cryo injury, which have an impact on cell viability and function.

This study showed that thawing after cryopreservation caused decrease in attachment and proliferation ability, though cell viability after thawing was quite high. This fact might be due to the use of trypan blue exclusion method to assess viability directly after thawing, which was a limitation in our study. A study showed that trypan blue exclusion method only detected viable and dead cells, and not the cells that were in process of dying.<sup>15</sup> Further, another study showed that assessment by trypan blue exclusion method that was done directly after thawing gave higher viability compared to assessment after three days in culture,<sup>16</sup> when the cells in dying process were finally dead. Upon cryo injury, some cells begin cell death process due to necrosis and apoptosis that may take 6-12 hours and 12-36 hours to complete, respectively, depending on the cell type.<sup>17</sup> Therefore, remaining viable and functional cells that could attach and proliferate should proliferate more to attain confluence that explained the faster appearance of senescent cells, which in this study was in P-3, compared to fresh cells that began to show senescent cells at P-10.<sup>9</sup> Moreover, population doublings in re-culture after thawing following cryopreservation were actually more than the computed value, as we used seeding density of viable cells based on trypan blue exclusion method direct assay to compute the population doublings, while viable cell seeding density after thawing was actually much less. Therefore, cumulative population doubling was actually more than 34.34.

Expansion methods differ between labs. Therefore, comparing passage number between studies is not appropriate, and passage number should be accompanied by cumulative population doubling.

## Conclusion

No senescent cells were observed at P-2 (CPD > 9.38). Senescent cells began to appear at P-3 (CPD > 14.06), but in all passages until P-8 (CPD > 34.34) the senescent percentage was below 5%.

## Acknowledgement:

This study was funded by a grant from the Department of National Education of the Republic of Indonesia (PUSNAS 2015, contract number: 0435/UN2.R12/HKP.05.00/2015).

**Conflict of Interest:** The authors have no conflicting financial interest.

## References

1. Pawitan JA. Prospect of adipose tissue derived stem cells in regenerative medicine. *Cell Tissue Transplant Ther* 2009, 2, 7-9.
2. Swain RP, Subudhi BB, Mahapatra AK, Bolapareddi V. Bridging Between Disease, Prevalence and Treatment of Diabetes Mellitus : A Review. *Int J PharmTech Res* 2014-2015, 7(2), 212-28.
3. Shabeenataj S, Priya L. Stem Cell Therapy for Thalassemia: A Review. *Int J PharmTech Res* 2014, 6 (4), 1306-8.
4. Mohamadnejad M, Alimoghaddam K, Mohyeddin-Bonab M, Bagheri M, Bashtar M, Ghanaati H, et al. Phase I Trial of Autologous Bone Marrow Mesenchymal Stem Cell Transplantation in Patients with Decompensated Liver Cirrhosis. *Arc Iran Med* 2007, 10 (4), 459 –66.
5. Wang P, Li Y, Huang L, Yang J, Yang R, Deng W, et al. Effects and Safety of Allogenic Mesenchymal Stem Cell Intravenous Infusion in Active Ankylosing Spondylitis Patients Who Failed NSAIDs: A 20-Week Clinical Trial. *Cell Transplant* 2014, 23, 1293–303.
6. Jo CH, Lee YG, Shin WH, Kim H, Chai JW, Jeong EC, et al. Intra-Articular Injection of Mesenchymal Stem Cells for the Treatment of Osteoarthritis of the Knee: A Proof-of-Concept Clinical Trial. *Stem Cells* 2014, 32, 1254–66.
7. Galipeau J. The mesenchymal stromal cell dilemma—does a negative phase III trial of random donor mesenchymal stromal cells in steroid-resistant graft-versus-host disease represent a death knell or a bump in the road? *Cytotherapy* 2013;15(1):2-8.
8. Pawitan JA. Benefit of trehalosa pre incubation prior to cryopreservation. *Med J Indones* 2016;25: 127-8.
9. Mediana D, Liem IK, Pawitan JA, Goei N. Passage Effect on Aging of Human Umbilical Cord Derived Mesenchymal Stem Cell. *Online J Biol Sci* 2015; 15(3):170-7.
10. Pawitan JA, Liem IK, Budiyantri E, Fasha I, Feroniasanti L, Jamaan T, et al. Umbilical cord derived stem cell culture: multiple-harvest explant method. *Int J PharmTech Res* 2014;6(4): 1202-8.
11. Goei N, Liem IK, Pawitan JA, Mediana D. Effect of Platelet Rich Plasma on Post Cryopreservation Viability, Morphology, and Proliferation of Human Umbilical Cord Stem Cells. *Online J Biol Sci* 2015; 15 (2): 42-8.
12. Scheers I, Lombard C, Paganelli M, Campard D, Najimi M, Gala JL, et al. Human umbilical cord matrix stem cells maintain multilineage differentiation abilities and do not transform during long-term culture. *Plosone*. 2013; 8(8): 12 pages.
13. Leontieva OV, Demidenko ZN, Blagosklonny MV. Contact inhibition and high cell density deactivate the mammalian target of rapamycin pathway, thus suppressing the senescence program. *Proc Natl Acad Sci USA* 2014;111(24):8832-7.
14. Dimri GP, Lee X, Basile G, Acosta M, Scott G, Roskelley C, et al. A biomarker that identifies senescent human cells in culture and in aging skin in vivo. *Proc Natl Acad Sci USA* 1995;92:9363-7.
15. Francois M, Copland IB, Yuan S, Romieu-Mourez R, Waller EK, Galipeau J. Cryopreserved mesenchymal stromal cells display impaired immunosuppressive properties as a result of heat-shock response and impaired interferon- $\gamma$  licensing. *Cytotherapy* 2012; 14: 147–52.
16. Naaldijk Y, Staude M, Fedorova V, Stolzing A. Effect of different freezing rates during cryopreservation of rat mesenchymal stem cells using combinations of hydroxyethyl starch and dimethylsulfoxide. *BMC Biotechnology* 2012, 12:49.
17. Baust JG, Gao D, Baust JM. Cryopreservation. *Organogenesis* 2009; 5(3): 90-96.

\*\*\*\*\*

# Dian Mediana FK

## Effect of Cryopreservation and cumulative population

 Effect of cryopreservation

---

### Document Details

Submission ID

trn:oid::3618:105228326

Submission Date

Jul 21, 2025, 12:58 PM GMT+7

Download Date

Jul 21, 2025, 1:06 PM GMT+7

File Name

Effect of Cryopreservation and cumulative population.pdf

File Size

518.0 KB

6 Pages

2,774 Words

15,065 Characters





# 3% Overall Similarity

The combined total of all matches, including overlapping sources, for each database.




## Exclusions

▸ 10 Excluded Matches

## Match Groups

- 
**5 Not Cited or Quoted 3%**  
 Matches with neither in-text citation nor quotation marks
- 
**0 Missing Quotations 0%**  
 Matches that are still very similar to source material
- 
**0 Missing Citation 0%**  
 Matches that have quotation marks, but no in-text citation
- 
**0 Cited and Quoted 0%**  
 Matches with in-text citation present, but no quotation marks

## Top Sources

- 3%  Internet sources
- 2%  Publications
- 2%  Submitted works (Student Papers)

## Match Groups

- 5** Not Cited or Quoted 3%  
Matches with neither in-text citation nor quotation marks
- 0** Missing Quotations 0%  
Matches that are still very similar to source material
- 0** Missing Citation 0%  
Matches that have quotation marks, but no in-text citation
- 0** Cited and Quoted 0%  
Matches with in-text citation present, but no quotation marks

## Top Sources

- 3% Internet sources
- 2% Publications
- 2% Submitted works (Student Papers)

## Top Sources

The sources with the highest number of matches within the submission. Overlapping sources will not be displayed.

- 1** Student papers  
**De La Salle University - Manila on 2024-09-16** 1%
- 2** Internet  
**scholar.ui.ac.id** <1%
- 3** Internet  
**www.coursehero.com** <1%
- 4** Internet  
**www.researchgate.net** <1%
- 5** Student papers  
**Mt San Antonio College on 2024-06-07** <1%

3 See discussions, stats, and author profiles for this publication at: <https://www.researchgate.net/publication/317599882>

# Effect of Cryopreservation and cumulative population doublings on Senescence of Umbilical Cord Mesenchymal Stem Cells

Article in International Journal of PharmTech Research · April 2017

DOI: 10.20902/IJPTR.2017.10116

CITATIONS

7

READS

360

4 authors, including:

4 Jeanne Pawitan  
University of Indonesia  
184 PUBLICATIONS 1,391 CITATIONS  
[SEE PROFILE](#)

Isabella Liem  
University of Indonesia  
71 PUBLICATIONS 493 CITATIONS  
[SEE PROFILE](#)

5 Dian Mediana  
Trisakti University  
19 PUBLICATIONS 55 CITATIONS  
[SEE PROFILE](#)

1





PharmTech

## International Journal of PharmTech Research

CODEN (USA): IJPRIF, ISSN: 0974-4304, ISSN(Online): 2455-9563

Vol. 10, No. 02, pp 109-113, 2017

# Effect of Cryopreservation and cumulative population doublings on Senescence of Umbilical Cord Mesenchymal Stem Cells

Jeanne Adiwinata Pawitan<sup>1,2\*</sup>, Noviyanti Goei<sup>3,4</sup>, Isabella Kurnia Liem<sup>1,5</sup>,  
Dian Mediana<sup>3,4</sup>

<sup>1</sup>Stem Cell Medical Technology Integrated Service Unit, Cipto Mangunkusumo Central Hospital - Faculty of Medicine Universitas Indonesia, Jakarta, Indonesia

<sup>2</sup>Department of Histology, Faculty of Medicine Universitas Indonesia, Jakarta, Indonesia

<sup>3</sup>Biomedical Master program, Faculty of Medicine Universitas Indonesia, Jakarta, Indonesia

<sup>4</sup>Department of Anatomy, Faculty of Medicine Universitas Trisakti, Jakarta, Indonesia

<sup>5</sup>Department of Anatomy, Faculty of Medicine Universitas Indonesia, Jakarta, Indonesia

**Abstract : Background:** Multiple harvest explant method (MHEM) derived umbilical cord mesenchymal stem cells (UC-MSCs) was shown to undergo senescent beginning at passage-10 (P-10). However, for the same cells, there are no senescent data after cryopreservation and passage. Therefore, this study aimed to analyze the senescent profile of cryopreserved MHEM derived UC-MSCs after serial passages.

**Methods:** MHEM derived UC-MSCs were isolated and cultured in platelet lysate (PL) containing medium as described previously. The cells were cryopreserved at passage-1 (P-1) in 10% dimethyl sulfoxide (DMSO) and 10% PL containing alpha minimal essential medium ( $\alpha$ MEM). Cell density at cryopreservation was 500 000 cells/mL. After one month, the cells were thawed and recultured until P-8 in six 12-well plate. At 80-90% confluent, two wells were harvested and the cells were recultured into six wells, and the four remaining wells were subjected to senescent ( $\beta$ -galactosidase) staining, which was done for all passages. Random photographs were taken from all stained wells, and senescent percentage was recorded.

**Results:** No senescent cells were observed at P-2. Senescent cells began to appear at P-3. Percentage (mean  $\pm$  SD) of senescent cells from P-3 through P-8 were  $0.04 \pm 0.02$ ,  $1.18 \pm 1.82$ ,  $0.14 \pm 0.18$ ,  $0.49 \pm 0.00$ ,  $0.58 \pm 0.91$ , and  $0.07 \pm 0.07$ , respectively.

**Results:** No senescent cells were observed at P-2. Senescent cells began to appear at P-3. Percentage (mean  $\pm$  SD) of senescent cells from P-3 through P-8 were  $0.04 \pm 0.02$ ,  $1.18 \pm 1.82$ ,  $0.14 \pm 0.18$ ,  $0.49 \pm 0.00$ ,  $0.58 \pm 0.91$ , and  $0.07 \pm 0.07$ , respectively.

**Conclusion:** No senescent cells were observed at P-2 (cumulative population doubling [CPD]  $> 9.38$ ). Senescent cells began to appear at P-3 (CPD  $> 14.06$ ), but in all passages until P-8 (CPD  $> 34.34$ ) the senescent percentage was below 5%.

**Keywords:** MSC, umbilical cord, cryopreservation, passage, senescence.

## Introduction

Stem cells whether in the form of a crude mixture after isolation, expanded *in vitro* or differentiated into functional cells have been shown potential to cure various kind of diseases.<sup>1-3</sup> Moreover, mesenchymal stem cells are increasingly used in various clinical trials and have showed promising results.<sup>4-6</sup> However, *in vitro* over expansion to provide enough number of cells, and cryopreservation to meet the need of ready to use cells might compromise cell quality. A review on the failure of phase III clinical trial, which used over expanded cryopreserved mesenchymal stem cells to cure steroid resistant graft versus host disease, supposed that the failure was due to impaired immunomodulatory functions due to cryopreservation, and senescence due to overexpansion.<sup>7, 8</sup> Therefore, for patients' safety and prospective comparisons between trial results, cells need to be characterized, and their function and senescent profile need to be analyzed.

Multiple harvest explant method (MHEM) derived umbilical cord mesenchymal stem cells (UC-MSCs) were shown to undergo senescent beginning at passage-10 (P-10), but until P17, the senescent percentage was below 5%.<sup>9</sup> Since for MHEM UCMSCs there are no senescent data after cryopreservation, this study aimed to analyze the senescent profile of cryopreserved MHEM derived UC-MSCs after serial passages. Cumulative population doublings were computed for every passages to provide comparison measures with other previous and future studies.

## Materials and Methods

This was an *in vitro* observational study that was done June April 2014 through January 2015, in Stem Cell Medical Technology Integrated Service Unit, Cipto Mangunkusumo Central Hospital - Faculty of Medicine Universitas Indonesia. Ethical approval was obtained from the Ethical Committee of the Faculty of Medicine, Universitas Indonesia (ethical clearance No. 665/UN2.F1/ETIK/2014).

MHEM derived UC-MSCs were isolated and cultured in platelet lysate (PL) containing medium as described previously,<sup>10</sup> and were proven to be MSCs by their property that attached to plastics, by their surface markers, and ability to differentiate into chondrogenic, osteogenic and adipogenic lineages. The cells were cryopreserved at passage-1 (P-1) in 10% dimethyl sulfoxide (DMSO) and 10% PL containing alpha minimal essential medium ( $\alpha$ MEM). Cell density at cryopreservation was 500,000 cells/mL, and cryopreservation procedure was done at -20°C for 24 hours, and then moved into liquid N<sub>2</sub> tank, vapor phase as described previously.<sup>11</sup> After one month, the cells were thawed and subjected to serial passages until P-8, and senescent analysis was done for all passages.

### Thawing and serial passages

Thawing was done as quick as possible as described previously.<sup>11</sup> In brief, the cryotubes were immersed in a 37°C water bath. After that, the cells were transferred into a complete medium, washed, and viable and total cells were counted by trypan blue exclusion method. For all passages, the cells were plated in six wells of a 12-well plate with a seeding density of 5000 viable cells/cm<sup>2</sup>. Upon 80-90% confluent, two wells were harvested and the cells were re-cultured into six wells, and the four remaining wells were subjected to senescent ( $\beta$  galactosidase) staining (Sigma Cat. no CS0030) as described previously.<sup>9</sup>

### Senescent analysis

Five random photographs of all stained wells were taken using an inverted microscope connected to a digital camera, and senescent percentage from each well was recorded. As the total number of cells at 80-90% confluence was difficult to count, only senescent cells were counted, and total number of cells was interpolated using the area of photograph, area of the well, and mean value of total count from the two harvested wells.

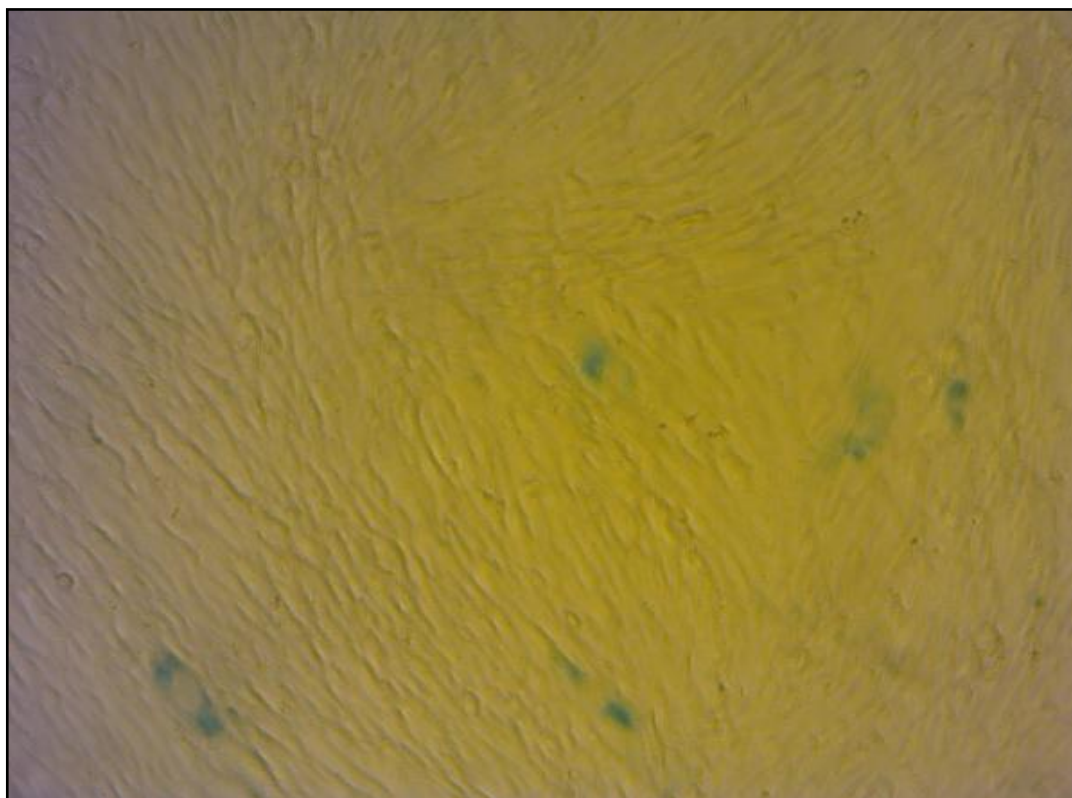
### Data collection and processing

Data collected were numbers of harvested cells from the two wells from all passages, and numbers of stained cells in the photographs. Observation and data collection of senescent cell number were done in clear and sharp photograph. The data were tabulated according to the passage and well number. The percentages of

senescent cells, and mean and standard deviation (SD) value of the senescent cells in all passages were computed. Further, cumulative population doublings at P-3 through P-8 were computed.

## Results

Viability after thawing following cryopreservation was 80%. However, reculture after thawing showed that most cells were floating and only few cells were attached the next day, much fewer compared to passages of fresh cells after harvest. Floating cells were eliminated after medium change. Reculture after thawing took longer time to become confluent compared to passages of fresh cells. Population doubling at P-1, P-2, and P-3 was 4.11, 5.27, and 4.68 respectively



**Figure 1. Microphotograph of cells in a P-3 well with non senescent and five senescent cells Senescent ( $\beta$  galactosidase) staining (Sigma Cat. no CS0030), blue color indicate a senescent cell, magnification 100x**

No senescent cells were observed at P-2. Senescent cells began to appear at P-3 (Figure 1). Some of the wells that were intended to be stained were over confluent, and were detached after fixation. Further, some photographs were not sharp, so that they could not be analyzed. Therefore, the number of photographs that was analyzed for senescent cells numbers was incomplete. The number of photograph that were analyzed, mean and standard deviation (SD) of percentage of senescent cells, and cumulative population doubling (CPD) from P-3 through P-8 is shown in Table 1.

**Table 1. Percentage of senescent cells, number of analyzed photographs, and CPDs in P-3 through P-8**

	P-3	P-4	P-5	P-6	P-7	P-8
Mean	0.04	1.18	0.14	0.46	0.58	0.07
SD	0.02	1.82	0.18	NA	0.91	0.07
n	12	4	18	1	16	15
CPD	14.06	16.75	21.18	26.40	29.55	34.34

P-= passage-, CPD= cumulative population doublings, SD=standard deviation, NA= not applicable, n= number of analyzed photographs

## Discussion

A study showed an increase in cell size with increasing passage, which was supposed to be due to senescence,<sup>12</sup> and another study that compared the size of senescent and non-senescent cells suggested that a non senescent cell should have a size that is less than 2602  $\mu\text{m}^2$ .<sup>9</sup> Our previous result showed that serial passages after cryopreservation in the same method as this research caused enlargement of cell size at P-2 compared to fresh cells (mean value 2674 vs 2056  $\mu\text{m}^2$ ),<sup>11</sup> though this study showed that in P-2 there was no senescent cells. Therefore, after cryopreservation, P-2 cells in this study might begin the senescent process, but had not accumulated enough  $\beta$  galactosidase to be detected with  $\beta$  galactosidase staining, which in our study, began to detect senescence in P-3.

Our results showed a non steady increase in senescent percentage from P-3 to P-8, which showed that senescent percentages in P-5 and P-8 were lower than P-4 and P-7 respectively (Table 1). This fact might be due to the timing of senescent staining, which was the limitation of our study. Staining at 80% confluence, might give different result compared with at 90% or when the cultures were over confluence. The more confluence the culture, the more are the contacts between cells, which cause contact inhibition. Contact inhibition and serum starvation due to confluent culture may lead to quiescence, and increase in lysosomal activation and hence increased  $\beta$  galactosidase activity. Therefore,  $\beta$  galactosidase positive staining might represent senescent or quiescent cells.<sup>13</sup> In our study, we used  $\beta$  galactosidase staining at pH 6 to detect senescence associated  $\beta$  galactosidase activity, which can distinguish senescent from quiescent cells. Quiescent cells due to confluent culture may show weaker  $\beta$  galactosidase staining, which disappeared after re-culture.<sup>14</sup> Moreover, it has been postulated that contact inhibition suppressed senescence.<sup>13</sup>

To be used for patients, MSCs should be non senescent and functional. Therefore, over expansion should be avoided. Moreover, allogeneic MSCs are usually cryopreserved to match the timing of patient need and availability of cells. Cryopreservation and thawing may cause cryo injury, which have an impact on cell viability and function.

This study showed that thawing after cryopreservation caused decrease in attachment and proliferation ability, though cell viability after thawing was quite high. This fact might be due to the use of trypan blue exclusion method to assess viability directly after thawing, which was a limitation in our study. A study showed that trypan blue exclusion method only detected viable and dead cells, and not the cells that were in process of dying.<sup>15</sup> Further, another study showed that assessment by trypan blue exclusion method that was done directly after thawing gave higher viability compared to assessment after three days in culture,<sup>16</sup> when the cells in dying process were finally dead. Upon cryo injury, some cells begin cell death process due to necrosis and apoptosis that may take 6-12 hours and 12-36 hours to complete, respectively, depending on the cell type.<sup>17</sup> Therefore, remaining viable and functional cells that could attach and proliferate should proliferate more to attain confluence that explained the faster appearance of senescent cells, which in this study was in P-3, compared to fresh cells that began to show senescent cells at P-10.<sup>9</sup> Moreover, population doublings in re-culture after thawing following cryopreservation were actually more than the computed value, as we used seeding density of viable cells based on trypan blue exclusion method direct assay to compute the population doublings, while viable cell seeding density after thawing was actually much less. Therefore, cumulative population doubling was actually more than 34.34.

Expansion methods differ between labs. Therefore, comparing passage number between studies is not appropriate, and passage number should be accompanied by cumulative population doubling.

## Conclusion

No senescent cells were observed at P-2 (CPD > 9.38). Senescent cells began to appear at P-3 (CPD > 14.06), but in all passages until P-8 (CPD > 34.34) the senescent percentage was below 5%.

## Acknowledgement:

This study was funded by a grant from the Department of National Education of the Republic of Indonesia (PUSNAS 2015, contract number: 0435/UN2.R12/HKP.05.00/2015).



**Conflict of Interest:** The authors have no conflicting financial interest.

## References

1. Pawitan JA. Prospect of adipose tissue derived stem cells in regenerative medicine. *Cell Tissue Transplant Ther* 2009, 2, 7-9.
2. Swain RP, Subudhi BB, Mahapatra AK, Bolapareddi V. Bridging Between Disease, Prevalence and Treatment of Diabetes Mellitus : A Review. *Int J PharmTech Res* 2014-2015, 7(2), 212-28.
3. Shabeenataj S, Priya L. Stem Cell Therapy for Thalassemia: A Review. *Int J PharmTech Res* 2014, 6 (4), 1306-8.
4. Mohamadnejad M, Alimoghaddam K, Mohyeddin-Bonab M, Bagheri M, Bashtar M, Ghanaati H, et al. Phase I Trial of Autologous Bone Marrow Mesenchymal Stem Cell Transplantation in Patients with Decompensated Liver Cirrhosis. *Arc Iran Med* 2007, 10 (4), 459 –66.
5. Wang P, Li Y, Huang L, Yang J, Yang R, Deng W, et al. Effects and Safety of Allogenic Mesenchymal Stem Cell Intravenous Infusion in Active Ankylosing Spondylitis Patients Who Failed NSAIDs: A 20-Week Clinical Trial. *Cell Transplant* 2014, 23, 1293–303.
6. Jo CH, Lee YG, Shin WH, Kim H, Chai JW, Jeong EC, et al. Intra-Articular Injection of Mesenchymal Stem Cells for the Treatment of Osteoarthritis of the Knee: A Proof-of-Concept Clinical Trial. *Stem Cells* 2014, 32, 1254–66.
7. Galipeau J. The mesenchymal stromal cell dilemma—does a negative phase III trial of random donor mesenchymal stromal cells in steroid-resistant graft-versus-host disease represent a death knell or a bump in the road? *Cytotherapy* 2013;15(1):2-8.
8. Pawitan JA. Benefit of trehalosa pre incubation prior to cryopreservation. *Med J Indones* 2016;25: 127-8.
9. Mediana D, Liem IK, Pawitan JA, Goei N. Passage Effect on Aging of Human Umbilical Cord Derived Mesenchymal Stem Cell. *Online J Biol Sci* 2015; 15(3):170-7.
10. Pawitan JA, Liem IK, Budiyaniti E, Fasha I, Feroniasanti L, Jamaan T, et al. Umbilical cord derived stem cell culture: multiple-harvest explant method. *Int J PharmTech Res* 2014;6(4): 1202-8.
11. Goei N, Liem IK, Pawitan JA, Mediana D. Effect of Platelet Rich Plasma on Post Cryopreservation Viability, Morphology, and Proliferation of Human Umbilical Cord Stem Cells. *Online J Biol Sci* 2015; 15 (2): 42-8.
12. Scheers I, Lombard C, Paganelli M, Campard D, Najimi M, Gala JL, et al. Human umbilical cord matrix stem cells maintain multilineage differentiation abilities and do not transform during long-term culture. *Plosone*. 2013; 8(8): 12 pages.
13. Leontieva OV, Demidenko ZN, Blagosklonny MV. Contact inhibition and high cell density deactivate the mammalian target of rapamycin pathway, thus suppressing the senescence program. *Proc Natl Acad Sci USA* 2014;111(24):8832-7.
14. Dimri GP, Lee X, Basile G, Acosta M, Scott G, Roskelley C, et al. A biomarker that identifies senescent human cells in culture and in aging skin in vivo. *Proc Natl Acad Sci USA* 1995;92:9363-7.
15. Francois M, Copland IB, Yuan S, Romieu-Mourez R, Waller EK, Galipeau J. Cryopreserved mesenchymal stromal cells display impaired immunosuppressive properties as a result of heat-shock response and impaired interferon- $\gamma$  licensing. *Cytotherapy* 2012; 14: 147–52.
16. Naaldijk Y, Staude M, Fedorova V, Stolzing A. Effect of different freezing rates during cryopreservation of rat mesenchymal stem cells using combinations of hydroxyethyl starch and dimethylsulfoxide. *BMC Biotechnology* 2012, 12:49.
17. Baust JG, Gao D, Baust JM. Cryopreservation. *Organogenesis* 2009; 5(3): 90-96.

\*\*\*\*\*