

Bali Medical Journal



INDONESIAN PHYSICIAN FORUM &
INDONESIA COLLEGE OF SURGEONS,
INDONESIA

Editor-in-Chief

Prof. Dr. Sri Maliawan, SpBS

(Scopus ID), (Google scholar)

srimaliawan@unud.ac.id

/ maliawans@yahoo.com

Department of Neuro Surgery,

Udayana University

Sanglah General Hospital

Bali - Indonesia

Associate Editor

Prof. Putra Manuaba, M.Phil

(Scopus ID), (Google Scholar)

putramanuaba@unud.ac.id

/ putramanuaba28@yahoo.com

Biomedicine Postgraduate Program,

Udayana University

Bali - Indonesia

Prof. Ketut Suwiyoga, SpOG

(Scopus ID)

suwiyoga@unud.ac.id

Faculty of Medicine, Udayana

University, Sanglah Hospital

Denpasar, Bali-Indonesia

Editorial Board for Regional Asia

Prof Huang Qin

([Scopus ID](#))

qhuang@cqu.edu.cn

Chairman Dept. of Neurosurgery,
Guangdong 999 Hospital Guangzhou
China

**Assoc. Prof. Mohammad Amin
Bahrami**

([Scopus ID](#))

aminbahrami1359@gmail.com

Head of healthcare management
department, Shahid Sadoughi
University of Medical Sciences,
Yazd, Iran

Dr. Tanveer Beg, PhD

([Scopus ID](#))

tbmirza@jazanu.edu.sa

Assistant Professor, Department of
Biology, Faculty of Science, Jazan
University, Jazan, Saudi Arabia.

Editorial Board for Regional Asia

Prof Huang Qin

(Scopus ID)

qhuang@cqu.edu.cn

Chairman Dept. of Neurosurgery,
Guangdong 999 Hospital Guangzhou
China

**Assoc. Prof. Mohammad Amin
Bahrami**

(Scopus ID)

aminbahrami1359@gmail.com

Head of healthcare management
department, Shahid Sadoughi
University of Medical Sciences,
Yazd, Iran

Dr. Tanveer Beg, PhD

(Scopus ID)

tbmirza@jazanu.edu.sa

Assistant Professor, Department of
Biology, Faculty of Science, Jazan
University, Jazan, Saudi Arabia.

The change of cell biometric and its nucleus on cervical-squamous-epithelial-cell with GA genotype of Fas-promoter-670 gene, high-risk human papillomavirus and *Candida* species infection: a case report



Edy Parwanto^{1*}, Raditya Wratsangka², Assangga Guyansyah², Kirana Anggraeni²,
 Reza Aditya Digambiro³, David Tjahyadi⁴, Hanslavina Arkeman⁴,
 Haryo Ganeca Widyatama⁴, Hosea Jaya Edy⁵ and Yosua Jaya Edy^{6,7}

¹Department of Biology, Faculty of Medicine, Universitas Trisakti, Indonesia;

²Department of Obstetry and Gynecology, Faculty of Medicine, Universitas Trisakti, Indonesia;

³Department of Anatomical Pathology, Faculty of Medicine, Universitas Trisakti, Indonesia;

⁴Department of Histology, Faculty of Medicine, Universitas Trisakti, Indonesia

⁵Study Program of Pharmacy, Faculty of Math and Natural Sciences, Universitas Sam Ratulangi, Indonesia;

⁶Center for Development of Civil Servants, State Personnel Board The Republic of Indonesia;

⁷Department of Sociology, Faculty of Social Politic, Universitas Kristen Indonesia, Indonesia

*Corresponding author:

Parwanto MLE;
 Department of Biology, Faculty of Medicine, Universitas Trisakti, Indonesia;
edyparwanto@trisakti.ac.id;
edy.parwanto@gmail.com

Received: 2020-12-17

Accepted: 2021-03-15

Published: 2021-04-01

ABSTRACT

Background: Cervical samples of patients with human papillomavirus (HPV) infections show positive results in HPV DNA testing. HPV infection can alter cervical squamous epithelial cells (CSECs) to be abnormal. Epigenetically, CSECs that change to be abnormal are affected by Fas-promoter-670 gene polymorphism. High-risk HPV (hr-HPV) patients can be infected by other microbes, for example, *Candida* species (*Candida* sp.). The present study's purpose was to show CSEC biometrics based on epigenetics of the Fas-promoter-670 gene polymorphism in Indonesian women with hr-HPV and *Candida* sp. infection. Biometric quantification was performed based on the following analysis of CSECs.

Case report: Indonesian hr-HPV women at the age of 28 years, with *Candida* sp. infection, underwent a Pap smear examination on April 21st, 2016, using the ThinPrep method, and a blood test was also performed using the cubital vein. Blood and ThinPrep samples were examined for the Fas-promoter-670 gene polymorphism. Epigenetically, the subjects had the GA genotype of the Fas-promoter-670 gene in the blood and ThinPrep samples. Patients with *Candida* sp. infection in the early stages were characterized by the appearance of polymorphonuclear leukocytes (PMN), whereas those in advanced stages presented without PMN on the hyphae. CSEC biometric measurements were performed quantitatively using mononuclear CSECs (mn-CSECs) and binucleated CSECs (bn-CSECs).

Conclusion: Biometric measurements of the CSECs were performed quantitatively and assessed the length, width, area and perimeter of the cell and its nuclei. Cell length, cell width, nucleus area, nucleus perimeter and nucleus length index were significantly different between the mn-CSECs, the 1st nucleus of bn-CSECs and 2nd nucleus of bn-CSECs ($P < 0.05$).

Keywords: Epigenetics, Fas promoter-670 gene, *Candida* sp., cervical-squamous-epithelial-cells, cell biometrics.

Cite This Article: Parwanto, E., Wratsangka, R., Guyansyah, A., Anggraeni, K., Digambiro, R.A., Tjahyadi, D., Arkeman, H., Widyatama, H.G., Edy, H.J., Edy, Y.J. 2021. The change of cell biometric and its nucleus on cervical-squamous-epithelial-cell with GA genotype of Fas-promoter-670 gene, high-risk human papillomavirus and *Candida* species infection: a case report. *Bali Medical Journal* 10(1): 74-81. DOI: 10.15562/bmj.v10i1.2138

INTRODUCTION

The ThinPrep Pap test can be used to identify precancerous lesions in patients to facilitate early detection to manage cervical cancer. ThinPrep Pap tests are currently the gold standard in liquid-based cytology testing, and their use is greatly improved compared with conventional Pap technology.¹ It has been demonstrated that the ThinPrep Pap test has high sensitivity and high specificity in

screening for cervical cancer.²

Precancerous cervical lesions are strongly associated with high-risk human papillomavirus (hr-HPV) infection. It has been demonstrated that persistent infection with high-risk types of HPV is the most significant factor for cervical cancer and precancerous lesion manifestation.³ A previous study has reported the incidence and mortality of cervical cancer and their relationship with the human

development index in 185 countries globally. Furthermore, screening methods include cytology (Papanicolaou test) and HPV testing, alone or in combination.⁴ However, HPV infection is not the only factor for the development of cervical cancer.⁵ Genetic and environmental factors are also associated with the development of cervical cancer.

APO-1/Fas (CD95/TNFRSF6) receptor is a type I transmembrane glycoprotein

that belongs to the tumor necrosis factor (TNF) or neuronal growth factor receptor superfamily.⁶ The human Fas-promoter-670 gene has been mapped and is located at chromosome 10q24.1⁷ or 10.23.⁸ This gene consists of 9 exons and eight introns. Exon 1 comprises the 5'-untranslated region (UTR) and DNA sequence for the first ten amino acids. Exons 2-5 encode the extracellular region, while exon 6 encodes the transmembrane region. Exons 7 and 8 encode the 36 amino acids of the membrane-proximal cytoplasmic receptor. Exon 9 encodes the remaining 109 amino acids, including the 'death domain' and the 3'-UTR.⁶

The Fas-promoter-670 gene plays a central role in programmed cell death's physiological regulation (also termed apoptosis). Failure of this gene's regulation produces a death signal reported in several types of cancer.^{9,10} It has been reported that a single nucleotide polymorphism at site 670 in the Fas gene's enhancer region is associated with tumorigenesis.¹¹ A study has demonstrated an association between Fas-promoter-670 gene polymorphism and cervical cancer. A statistically significant correlation was identified between the susceptibility for cervical cancer and the GA and combined GA+GG genotypes in a study focused on an Indian population.¹² An association between Fas-promoter-670 gene polymorphism and HPV infection has also been shown in Japan's cervical cancer.¹³ Another study in Asia has also demonstrated a positive association between Fas-promoter-670 gene polymorphism and cervical cancer.¹⁴ Additionally, a previous study has reported a case of a high-risk Indonesian mother, whose Fas-promoter-670 gene in normal CSECs was mutated from AA to GA, whereas in the lymphocyte cells, the genotype was AA.¹⁵

A previous study has reported that the *Candida species* (*Candida sp.*) is of great concern due to its human hosts' infection, particularly patients with cancer.¹⁶ Invasive candidiasis is a serious infection that predominantly affects critically ill and immunocompromised patients. In general, *Candida albicans* is a species that is involved in this infection.¹⁷ Furthermore, it has been stated that cancer patients have a greater risk for serious infections, such as

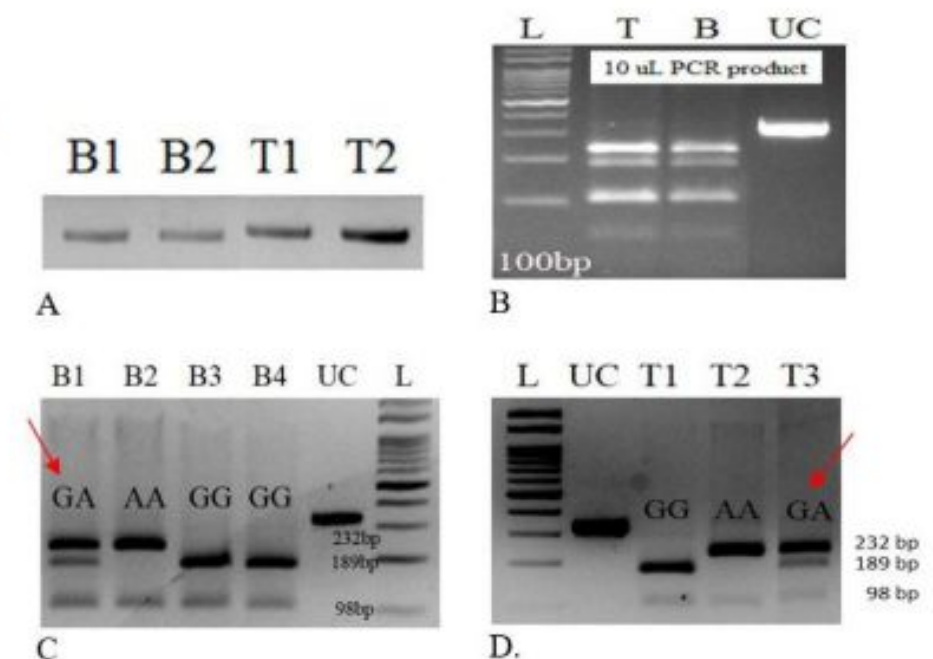


Figure 1. Detection of Fas-promoter-670 gene G/A polymorphism in blood and CSECs. (A) DNA extraction from blood and CSECs samples. (B). Optimization of restriction fragment length polymorphism from the ThinPrep Pap test of CSECs and blood samples with BstN1 enzyme. L, molecular weight marker; T, ThinPrep CSEC sample; B, blood sample; UC, running sample without BstN1 enzyme. (C) Genotyping of the Fas-promoter-670 gene from the blood sample. B1-B4, sample number; UC, running sample without BstN1 enzyme; L, molecular weight marker. The three possible genotypes were defined by three distinct patterns: AA (232, 98 bp), GA (232, 189, 98 bp), and GG (189, 98 bp). The subject, in this case, had the GA genotype of the Fas-promoter-670 gene (red arrow, B1 sample). (D) Genotyping of the Fas-promoter-670 gene from the ThinPrep CSEC sample. L, molecular weight marker; UC, running sample without BstN1 enzyme; T1-T3, sample number. The three possible genotypes were defined by three distinct patterns: AA(232, 98 bp), GA(232, 189, 98 bp), and GG (189, 98 bp). The subject, in this case, had the GA genotype of the Fas-promoter-670 gene (red arrow, T3 sample). CSEC, cervical squamous epithelial cell; PCR, polymerase chain reaction; bp, base pair.

Candida sp. Patients with candidemia have a serious problem due to high mortality, particularly if resistant *Candida spp.* cause it.¹⁸

Binucleation of CSECs in patients with *Candida sp.* infection has been reported. It has been stated that binucleation is a reactive cellular change in Pap smears due to *Candida* infection.¹⁹ A study result previously indicated an effect of HPV infection on the number of nuclei in CSECs. Following HPV infection, the appearance of CSECs on the ThinPrep Pap slide demonstrates a different number of nuclei, exhibiting ≥ 1 nucleus. In the

cells with >1 nucleus, if the nuclei pressed against each, they were defined as positive compression. The nuclei contacting but not pressing against each other were defined as negative compression.²⁰ It has been reported that positive compression of binucleated cells may be present due to hr-HPV infection, which is caused due to inflammation in intraepithelial lesions or malignancy cases infected with *Candida sp.*¹⁹ The present report evaluates CSEC biometrics' performance and its nuclei with a GA genotype of the Fas-promoter-670 gene in who has hr-HPV and *Candida sp.* infection.

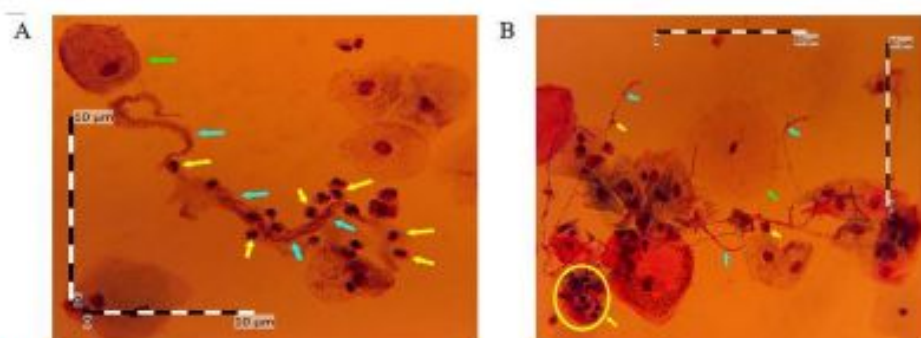


Figure 2. The appearance of CSEC and hyphae of *Candida sp.* in the subject with high-risk HPV and *Candida sp.* infection. (A) mn-CSEC (lime arrow) in the subject with high-risk HPV and *Candida sp.* infection in the early stage. The aqua arrow indicates hyphae and the yellow arrow indicates the polymorphonuclear leukocyte. Magnification, 400x. (B) mn-CSEC (lime arrow) in the subject with high-risk HPV and *Candida sp.* infection in the advanced stage. The aqua arrow indicates hyphae and the yellow arrow indicates a spore. Magnification 400x. mn-CSEC, mononucleated cervical squamous epithelial cell; CSEC, cervical squamous epithelial cell.

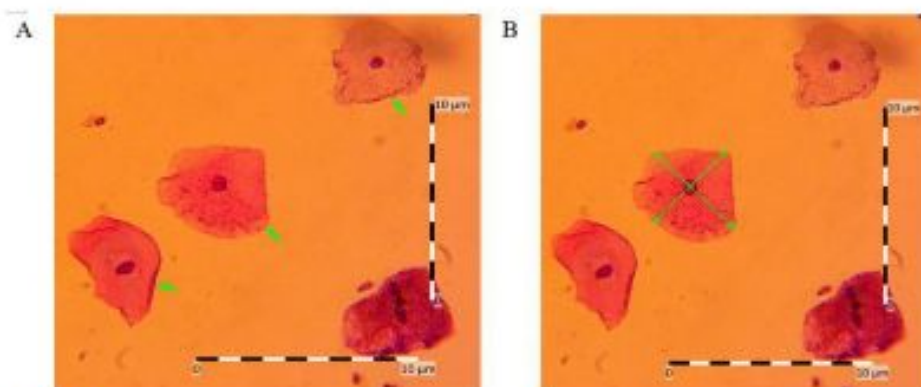


Figure 3. The appearance of mn-CSECs in the subject with high-risk HPV and *Candida sp.* infection. (A) The appearance of mn-CSECs available for measurement (lime arrow). Magnification, 400x. (B) Cell length and cell width measurements result of mn-CSECs. Magnification 400x. mn-CSEC, mononucleated cervical squamous epithelial cell.

CASE REPORT

A 28-year-old Indonesian woman living with hr-HPV and *Candida sp.* infection on April 21st, 2016, underwent a Pap smear examination and a blood test. Before participating in this study, the participant provided informed consent. Ethical approval for the study was obtained from the "Komisi Etik Riset Fakultas Kedokteran, Universitas Trisakti, Indonesia" (approval no. 60/KER/FK/05/2013). Informed written consent was obtained from participants before data collection. The subject concerned was included in

the community of Indonesian women living with hr-HPV based on laboratory examinations. In this case, the subject first has coitus at the age of 16 years, had free sex, and never received HPV vaccination.

Blood samples (~10 µl) were taken from a cubital vein and inserted into an ethylene diamine tetraacetate (EDTA) tube. The Pap smear examination was performed according to the ThinPrep method to collect cytological material. Whole blood in the EDTA tube and cytological material in the ThinPrep solution was analyzed for Fas-promoter-670 gene polymorphisms by restriction fragment

length polymorphism (RFLP) *Bacillus stearothermophilus* N1 (BstN1) enzyme. DNA extraction from the blood and ThinPrep samples was performed using chloroform. In addition, the forward primer, 5'CTACCTAAGAGCTA TCTACCGTTC3' and reverse primer, 5'GGCTGTCCATGTTGTGGCTGC3' were used. Epigenetically, the subject, in this case, had the GA genotype of the Fas-promoter-670 gene both in the blood and ThinPrep samples (Figure 1).

In addition to analyzing the Fas-promoter-670 gene polymorphism, cytological material in the ThinPrep solution was also analyzed cytologically. ThinPrep 2000 was used to create slides automatically based on liquid-based cervical cytology. Three observers used Optilab Advance Plus and Image Raster 3 programs (PT MICONOS, Daerah Istimewa Yogyakarta, Indonesia (<https://miconos.ac.id/new/support/download>)). The presence of *Candida sp.* was based on the observation of hyphae under the microscope. *Candida sp.* infection can be divided into two stages, termed the early and advanced stages. *Candida sp.* infection in the early stage is characterized by polymorphonuclear leukocytes (PMNs), whereas at the advanced stage, no PMNs are observed on the hyphae of *Candida sp.* The spores of *Candida sp.* were observed qualitatively (Figure 2). The biometric measurements of CSECs were performed quantitatively, focusing on the length, width, area and perimeter of the cell and its nuclei. Optilab plus and Image Raster 3 programs were used to analyze the biometric measurements by three observers. The measurements of the mononucleated-CSECs (mn-CSECs) (Figure 3) and binucleated-CSECs (bn-CSECs) (Figure 4) were as follows: Cell length (CL), cell width (CW), cell area (CA), cell perimeter (CP), nucleus length (NL), nucleus width (NW), nucleus area (NA), nucleus perimeter (NP), nucleus length index (NLI), nucleus width index (NWI), nucleus area index (NAI) and nucleus perimeter index (NPI). Based on the results of biometric measurements, CSECs in these cases were divided into three groups: i) mn-CSEC; 1st nucleus of bn-CSEC (1st-bn-CSEC); and iii) 2nd nucleus of bn-CSEC (2nd-bn-CSEC),

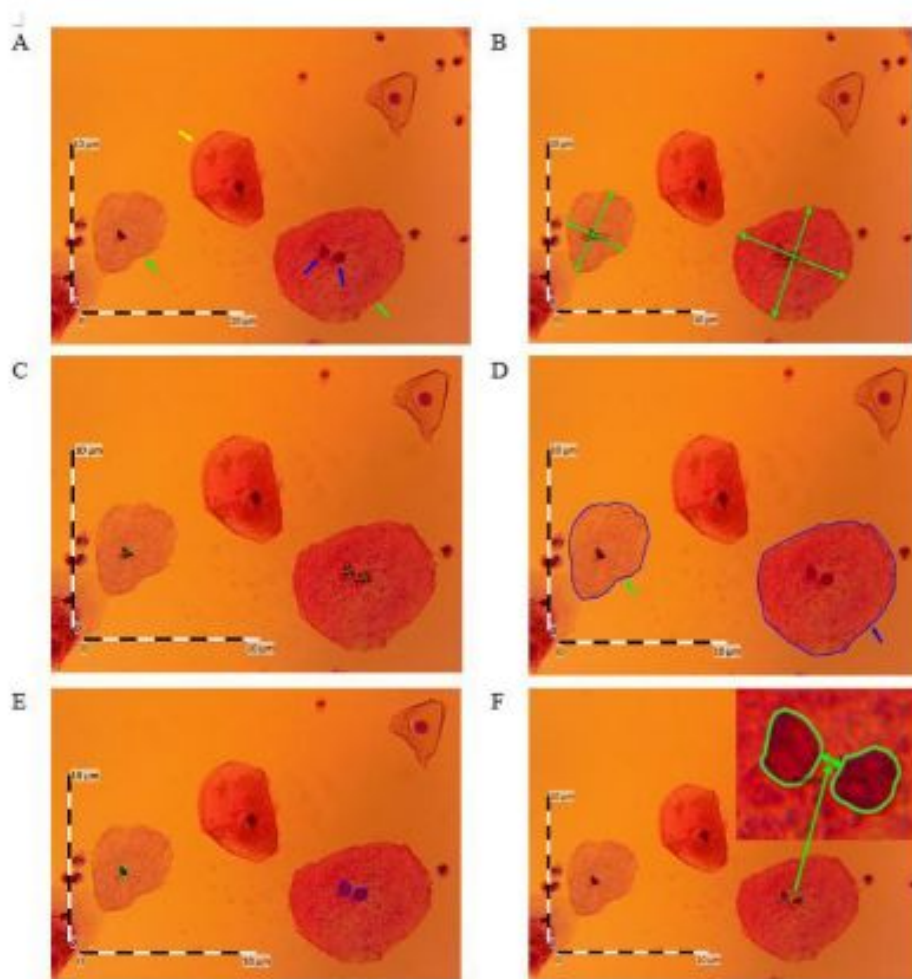


Figure 4. Comparison between mn-CSECs and bn-CSECs in the subject with high-risk HPV and *Candida sp.* infection. (A) The appearance of mn-CSECs available for measurement (lime arrow) compared with mn-CSECs not available for measurement (yellow arrow) and bn-CSECs available for measurement (blue arrow). Magnification, 400x. (B) Comparison of cell length and cell width between mn-CSECs and bn-CSECs. Magnification 400x. (C) Comparison of nucleus length and nucleus width between mn-CSECs and bn-CSECs. Magnification, 400x. (D) Cell area and cell perimeter of mn-CSECs (lime arrow) and bn-CSECs (blue arrow). Magnification 400x. (E) Nucleus area and nucleus perimeter of mn-CSECs (lime polygon) and bn-CSECs (blue polygon). Magnification 400x. (F) Compression of bn-CSECs demonstrated that nuclei are not pressing against each other. Magnification 400x. mn-CSEC, mononucleated cervical squamous epithelial cell; bn-CSEC, binucleated cervical squamous epithelial cell.

which are presented in Table 1. The CL, CW, NA, NP and NLI were not significantly different between the mn-CSECs, 1st-bn-CSECs and 2nd-bn-CSECs ($P>0.05$); however, CA, CP, NL, NW, NAI, NPI and NWI were significantly different ($P<0.05$). Multiple comparisons between the mn-CSECs, 1st-bn-CSECs and 2nd-bn-CSECs are presented in Table 2. The CA

and CP in mn-CSECs, 1st-bn-CSECs and 2nd-bn-CSECs were significantly different ($P<0.05$); however, 1st-bn-CSECs was not significantly different compared with 2nd-bn-CSECs ($P>0.05$). The NL and NW of mn-CSECs were significantly different compared with those of the 1st-bn-CSECs, as well as for 1st-bn-CSECs compared with 2nd-bn-CSECs ($P<0.05$), while mn-CSECs

were not significantly different compared with 2nd-bn-CSECs ($P>0.05$). The NAI and NPI were significantly different between the mn-CSECs and 1st-bn-CSECs or 2nd-bn-CSECs ($P<0.05$); however, they were not significantly different for the 1st-bn-CSECs compared with the 2nd-bn-CSECs ($P>0.05$). The NWI of mn-CSECs was significantly different from that of the 1st-bn-CSECs, and the NWI of 1st-bn-CSECs was significantly different compared with that of the 2nd-bn-CSECs ($P<0.05$). Simultaneously, mn-CSECs did not significantly differ compared with 2nd-bn-CSECs in terms of NWI ($P>0.05$).

DISCUSSION

DNA extraction from CSECs and leukocytes is useful for the genotyping of the Fas-promoter-670 gene and electrophoresis optimization. Genotyping of the Fas-promoter-670 gene in CSECs and leukocytes reveals that both have a GA genotype. To evaluate the exposure of HPV infection on the Fas-promoter-670 gene in CSECs, genotyping is necessary for both CSECs and leukocytes. The genotyping result of the Fas-promoter-670 gene in both CSECs and leukocytes of the present case demonstrated the same result, suggesting that the Fas-promoter-670 gene in CSECs does not mutate due to HPV infection. That is in contrast to a previous case in which the Fas-promoter-670 gene in the CSECs had a GA genotype, whereas had an AA genotype in the leukocytes. Therefore the Fas-promoter-670 gene in CSECs had mutated.¹⁵ This demonstrates that the Fas-promoter-670 gene in CSECs mutates due to the effect of HPV infection (local infection). We know that HPV infection is a local infection that is in the cervix.

The previous study results indicated that persistent HPV infection is necessary for the development of cervical cancer. Furthermore, it stated that genetic and epigenetic alterations in host cell genes are crucial for preventing cervical precancerous lesions to invasive cancer.²¹ A recent study has reported that samples collected from patients with cervical cancer tested positive for HPV DNA.²² Additionally, a study in Western Kenya also demonstrated associations between vaginal infections and potentially high

Table 1. Comparison of cell biometric and its nuclei between mn-CSEC and bn-CSEC in Indonesian women living with high-risk HPV and *Candida sp.* infection

Variable	mn-CSEC mean \pm SD (n cell=27)	1 st nucleus of bn-CSEC mean \pm SD (n cell=6)	2 nd nucleus of mn-CSEC mean \pm SD (n cell=6)	P value
CL (μ m)	5.44 \pm 0.31	5.72 \pm 0.61	5.73 \pm 0.26	0.900
CW (μ m)	4.49 \pm 0.29	4.47 \pm 0.28	4.76 \pm 0.13	0.930
CA (μ m ²)	20.45 \pm 1.23	25.45 \pm 2.78	25.61 \pm 0.71	0.000
CP (μ m)	16.67 \pm 1.09	18.64 \pm 1.72	19.30 \pm 0.96	0.000
NA (μ m ²)	0.47 \pm 0.05	0.45 \pm 0.04	0.45 \pm 0.03	0.403
NP (μ m)	2.50 \pm 0.26	2.44 \pm 0.29	2.46 \pm 0.10	0.835
NL (μ m)	0.83 \pm 0.08	0.76 \pm 0.09	0.89 \pm 0.05	0.034
NW(μ m)	0.63 \pm 0.06	0.72 \pm 0.05	0.62 \pm 0.09	0.014
NAI	2.31 \pm 0.24	1.79 \pm 0.14	1.74 \pm 0.11	0.000
NPI	15.05 \pm 1.78	13.11 \pm 1.28	12.77 \pm 1.03	0.003
NLI	15.36 \pm 1.83	13.50 \pm 2.26	15.59 \pm 1.08	0.074
NWI	14.20 \pm 1.68	16.17 \pm 2.12	12.98 \pm 1.92	0.012

Abbreviations: mn-CSEC, mononucleated cervical-squamous-epithelial-cell; bn-CSEC, binucleated cervical-squamous-epithelial-cell; 1st nucleus of bn-CSEC, first nucleus of binucleated cervical squamous epithelial cell; 2nd nucleus of bn-CSEC, second nucleus of binucleated cervical-squamous-epithelial-cell; SD, standard of deviation; n, sample size; p, significant level; CL, cell length (the longest cell diagonal that passes through the nucleus); CW, cell width (cell diagonal perpendicular to the diagonal of CL); CA, cell area; CP, cell perimeter; NA, nucleus area; NP, nucleus perimeter; NL, nucleus length (the longest cell nucleus diagonal); NW, nucleus width (cell nucleus diagonal perpendicular to the diagonal of NL); NAI, nucleus area index (nucleus area:cell area)x100; NPI, nucleus perimeter index (nucleus perimeter:cell perimeter)x100; NLI, nucleus length index (nucleus length:cell length)x100; NWI, nucleus width index (nucleus width:cell width)x100; μ m, milli-micron; μ m², milli-micron square.

risk and hr-HPV genotypes. In detail, of the free sex workers analyzed, 33.3% had HIV, and 57.7% harbored a potential hr-HPV and hr-HPV genotype.²² Based on numerous studies worldwide, the epidemiology of HPV infection and the oncogenic properties of HPV type are different from HPV genotypes. However, there are still many countries where population-based prevalence has not yet been identified. Furthermore, cervical cancer screening strategies are different between countries.²⁴

The results presented in the present case report are consistent with the results of recent research in Indonesia, which shows that HPV vaccination is not yet a priority for adolescents. This result is due to a lack of education and the cost of HPV vaccination. Therefore a program is required to provide accurate information regarding HPV vaccination to the public, particularly teenagers.²⁵

This case is consistent with studies of the Japanese population, which demonstrated that a GG genotype is associated with an increased risk for cervical cancer development, with an odd ratio (OR) of 2.56 compared to the AA genotype. Furthermore, the G allele in the GA or GG

genotype also increased the risk of cervical cancer, with an OR of 1.60.²⁶ Other studies investigating females in Northern India demonstrated that a GA genotype and a combination of GA and GG genotype significantly increased the risk of cervical cancer compared with an AA genotype.¹² Also, a study of Brazilian females <48 years old also reported that a GA genotype increases the risk of cervical cancer 5-fold compared with an AA genotype.²⁷

Research of a Greek population demonstrated no significant association between EVER1/2 polymorphisms (rs2290907 and rs16970849) and cervical cancer. However, the study provided additional data that suggested no association between the FAS polymorphism (rs1800682) and the susceptibility to persistent precancerous lesions and cervical cancer. Current literature for EVER1/2 polymorphisms and cervical cancer is very limited worldwide. Therefore, prospective studies are needed to clarify this point further.²⁸

Candida sp., the most common *Candida albicans*, plays an important role in the vaginal and vulvar epithelium's secondary infections. *Candida sp.* is part of the normal flora in women and is

often asymptomatic.²⁹ In a study based in Brazil, which investigated 633 pregnant women, 158 specimens (24.1%) exhibited pathogenic infections, while 22.9% were infected with *Candida spp.*³⁰ A subsequent study in Brazil demonstrated that of the 263 patients analyzed, *Candida spp.* was isolated in 27%, and >60% of the isolates were identified as *Candida albicans*. Also, *Candida non-albicans* were isolated at 8.6% in symptomatic patients and 14.3% in asymptomatic patients.³¹ Another study in Ethiopia reported a high prevalence rate of vulvovaginal candidiasis and *Candida non-albicans*. Therefore it is important to conduct continuous epidemiological surveys to measure species distribution changes from *C. albicans* to *Candida non-albicans*.³² A study in West Kenya demonstrated that bacterial vaginosis was the most common infection (48.3%), followed by *Trichomonas vaginalis* (31.4%) and *Candida spp.* (19.9%). Significant associations between bacterial vaginosis and HPV 58 and between *Candida spp.* and HPV 16 and HPV 53 suggest the need for sexually transmitted disease management in a cervical cancer prevention program.²³

The appearance of PMN on hyphae of *Candida sp.* in the early stage indicates an

Table 2. Multiple comparisons between mn-CSEC, 1stn-bn-CSEC and 2ndn-bn-CSEC in Indonesian women living with high-risk HPV and *Candida sp.* infection

Variable	Group	p-value
CA (µm ²)	mn-CSEC - 1 st n-bn-CSEC	0.000
	mn-CSEC - 2 nd n-bn-CSEC	0.000
	1 st n-bn-CSEC - 2 nd n-bn-CSEC	0.848
CP (µm)	mn-CSEC - 1 st n-bn-CSEC	0.001
	mn-CSEC - 2 nd n-bn-CSEC	0.000
	1 st n-bn-CSEC - 2 nd n-bn-CSEC	0.336
NL(µm)	mn-CSEC - 1 st n-bn-CSEC	0.069
	mn-CSEC - 2 nd n-bn-CSEC	0.115
	1 st n-bn-CSEC - 2 nd n-bn-CSEC	0.010
NW(µm)	mn-CSEC - 1 st n-bn-CSEC	0.007
	mn-CSEC - 2 nd n-bn-CSEC	0.527
	1 st n-bn-CSEC - 2 nd n-bn-CSEC	0.009
NAI	mn-CSEC - 1 st n-bn-CSEC	0.000
	mn-CSEC - 2 nd n-bn-CSEC	0.000
	1 st n-bn-CSEC - 2 nd n-bn-CSEC	0.714
NPI	mn-CSEC - 1 st n-bn-CSEC	0.012
	mn-CSEC - 2 nd n-bn-CSEC	0.004
	1 st n-bn-CSEC - 2 nd n-bn-CSEC	0.724
NWI	mn-CSEC - 1 st n-bn-CSEC	0.019
	mn-CSEC - 2 nd n-bn-CSEC	0.141
	1 st n-bn-CSEC - 2 nd n-bn-CSEC	0.004

Abbreviations: mn-CSEC, mononucleated cervical-squamous-epithelial-cell; 1st n-bn-CSEC, first nucleus of binucleated cervical-squamous-epithelial-cell; 2nd n-bn-CSEC, second nucleus of binucleated cervical-squamous-epithelial-cell; p, significant level; CL, cell length (the longest cell diagonal that passes through the nucleus); CW, cell width (cell diagonal perpendicular to the diagonal of CL); CA, Cell area; CP, Cell perimeter; NA, nucleus area; NP, nucleus perimeter; NL, Nucleus length (the longest cell nucleus diagonal); NW, nucleus width (cell nucleus diagonal perpendicular to the diagonal of NL); NAI, nucleus area index (nucleus area:cell area)x100; NPI, nucleus perimeter index (nucleus perimeter:cell perimeter)x100; NLI, nucleus length index (nucleus length:cell length)x100; NWI, nucleus width index (nucleus width:cell width)x100; µm, milli-micron; µm², milli-micron square.

infection and allergic reaction. By contrast, in the advanced stage of the infection, *Candida sp.*'s hyphae do not present with PMN. It has also been reported that *Candida sp.* infection produces a peptide toxin called candidalysin. The peptide toxin is produced by hyphae of *Candida albicans* and is characteristic of fungal pathogenesis. Besides, candidalysin is important for *C. albicans* mucosal infections. Candidalysin is known to activate epithelial cells to induce downstream innate immune responses associated with protection during vaginal infections. It has been reported that candidalysin plays an important role in stimulating a strong pro-inflammatory response by neutrophil recruitment. Conversely, if candidalysin is not present, the inflammatory response decreases due to a lack of neutrophil recruitment.¹³

Previous studies have shown that *Candida sp.* infects humans, particularly patients with cancer. The present study demonstrated that of the 68 blood samples, 5 (7.35%) were positive for the presence of *Candida spp.*, 2 (40%) identified to be positive for *Candida albicans*, and 3 (60%) were contained *Candida non-albicans*.¹⁶ The results of another study demonstrated that 8.7% of 150 samples were infected with *Candida sp.*²⁴

A recent study reported that ThinPrep cervical cytology samples could be used in cervical cancer screening. There have also been reports of Indonesian mothers with hr-HPV and the Fas-promoter-670 gene in CSECs, mutated from AA to GA, and had normal CSEC characteristics.¹⁵ Based on mn-CSEC and bn-CSEC's appearance, mn-CSEC characteristics, in this case, were normal, while bn-CSECs were

abnormal. This result is consistent with the fact that the abnormality of bn-CSECs is due to cytokinesis failure. Furthermore, cytokinesis failure has the potential for proliferation.³⁵ Based on the results of biometric cell measurements (Tables I and II), there was a change in the size and shape of CSECs. The CA, CP, NL, NW, NAI, NPI, NWI measurements between mn-CSECs, 1st-bn-CSECs and 2nd-bn-CSECs were significantly different ($P<0.05$); however, CL, CW, NA, NP and NLI were not significantly different ($P>0.05$). The present results and recent studies suggest that the growth rate of precancerous cells is significantly faster compared with normal cervical cells. However, the proliferation capacity of precancerous cells is similar to cervical cancer cells at the molecular level.¹⁶

In the Pap smear method, the determination of CSEC characteristics can be used to reference cervical cancer diagnosis. A light microscope and Image Raster 3 are used to analyze CSEC morphology and assess the cell's measurements and its nuclei. Most hospitals in Indonesia have facilities, such as the light microscope. The Image Raster 3 program is easy to obtain. This method may be simplest; however, cervical cancer can also be detected using a more sophisticated tool. The present study, which focused epigenetically on the Fas-promoter-670 gene and two contrasting pathogens, HPV and *Candida sp.*, may improve early screening methods of cervical cancer. Furthermore, the principles of CSEC measurements in this study can be used to develop cervical cytopathology examinations based on 'biometric artificial intelligence'.

CONCLUSION

Biometric measurements of the CSECs were performed quantitatively and assessed the length, width, area and perimeter of the cell and its nuclei. In the case investigated, cell length, cell width, nucleus area, nucleus perimeter and nucleus length index were significantly different between the mn-CSECs, the 1st nucleus of bn-CSECs and 2nd nucleus of bn-CSECs ($P<0.05$).

DISCLOSURE

Acknowledgments

We thank the leaders and staff of Prodia Laboratories who facilitated the Pap smear examination. Also, thanks are conveyed to the leaders and staff of the Laboratory of Molecular Biology, FKMMK, Universitas Gadjah Mada, Yogyakarta, Indonesia, which facilitated the genotyping examination of the Fas-promoter-670 gene.

Funding

This work was supported in the 4th by the Directorate General of Higher Education, Ministry of Education and Culture of the Republic of Indonesia, by the letter of agreement on the research assignment (grant no. 100/K3/KM/2015; February 23rd, 2015).

Availability Of Data And Materials

The datasets generated and analyzed in the present study are included in this published article.

Authors' Contributions

Mauritius Lambertus Edy Parwanto, Raditya Wratsangka, Assangga Guyansyah and Reza Aditya Digambiro designed the study, collected the samples, carried out the ThinPrep, genetic and cell imaging analysis, participated in the collecting and interpretation of data, wrote the manuscript, and gave the final approval of the version to be published. David Tjahyadi, Hanslavina Arkeman, Kirana Anggraeni, Haryo Ganeca Widyatama, Hosea Jaya Edy and Yosua Jaya Edy carry out the collected and analyzed the data, performed the literature review and wrote the manuscript. All authors read and approved the final manuscript.

Ethics Approval And Consent To Participate

The authors declare that they have obtained written informed consent to publish the details relating to the patient in this report. All possible steps have been taken to safeguard the identity of the patient. This study has ethical clearance by the 'Komisi Etik Riset Fakultas Kedokteran, Universitas Trisakti, Indonesia'.

Patient Consent For Publication

Not applicable.

Competing Interests

The authors declare that they have no competing interests.

REFERENCES

- Hologic. The science of sure. Optima HPV Assay [package insert, AW-14517-001 Rev 001 (EN)], San Diego, CA; Hologic Inc, 2017. <http://www.hologic.ca>.
- Chen H, Shu HM, Chang Z, Wang Z, Yao H, Zhu H, Lu T, Ma Q and Yang B. Efficacy of Pap Test in combination with ThinPrep cytological test in screening for cervical cancer. *Asian Pacific J Cancer Prev*. 2012;13:1651-165. doi: <http://dx.doi.org/10.7314/APJCP.2012.13.4.1651>. <https://pdfs.semanticscholar.org/5424/bb4bb8fbb7498c13bb5567c467af6d42533.pdf>.
- National Health Commission of the People's Republic of China. Chinese guidelines for diagnosis and treatment of cervical cancer (English version). *Chin J Cancer Res*. 2019;31(2):295-305. doi:10.21147/j.issn.1000-9604.2019.02.04. <https://doi.org/10.21147/j.issn.1000-9604.2019.02.04>.
- Rerucha C, Caro RJ, Vernon I. and Wheeler VL. Cervical cancer screening. *Am Fam Physician*. 2018;97(7):441-448. <https://www.aafp.org/afp/2018/0401/p441.html>.
- Šarenac T and Mikov M. Cervical cancer, different treatments and importance of bile acids as therapeutic agents in this disease. *Front Pharmacol*. 2019;10(484):1-29. doi: 10.3389/fphar.2019.00484. <https://www.frontiersin.org/articles/10.3389/fphar.2019.00484/full>.
- Behrmann I, Walczak H and Krammer PH. Structure of the human APO-1 gene. *Eur J Immunol*. 1994;24:3057-3062. <https://onlinelibrary.wiley.com/doi/abs/10.1002/eji.1830241221>.
- Inazawa J, Itoh N, Abe T and Nagata S. Assignment of the human Fas antigen gene (FAS) to 10q24.1. *Genomics*. 1992;14:821-822. [https://doi.org/10.1016/S0888-7543\(05\)80200-9](https://doi.org/10.1016/S0888-7543(05)80200-9).
- Litcher P, Walczak H, Weitz S, Behrmann I and Krammer PH. The human APO-1 (APT) antigen maps to 10q23: A region that is syntenic with mouse chromosome 19. *Genomics*. 1992;14:179-180. doi: 10.1016/S0888-7543(05)80302-7. <https://www.ncbi.nlm.nih.gov/pubmed/1385299>.
- Butler LM, Hewett PJ, Butler WJ, and Cowled PA. Down-regulation of Fas gene

expression in colon cancer is not a result of allelic loss or gene rearrangement. *Br J Cancer*. 1998;77:1454-1459. doi: 10.1038/bjc.1998.239. <https://www.ncbi.nlm.nih.gov/pmc/articles/PMC2150190/>.

- Shimonishi T, Isse K, Shibata F, Aburatani I, Tsuneyama K, Sabit H, Harada K, Miyazaki K and nakanumai Y. Up-regulation of fas ligand at early stages and down-regulation of Fas at progressed stages of intrahepatic cholangiocarcinoma reflect evasion from immune surveillance. *Hepatology*. 2000;32:761-769. doi: 10.1053/jhep.2000.18192. <https://www.ncbi.nlm.nih.gov/pubmed/11003620>.
- Farre L, Bittencourt AL, Silva-Santos G, Almeida A, Silva AC, Decanin D, Soares GM, Alcantara Jr LC, Van Dooren S, Galva" o-Castro C, Vandamme AM and Van Weyenbergh J. Fas-670 promoter polymorphism is associated to susceptibility, clinical presentation, and survival in adult T cell leukemia. *J Leukocyte Biol*. 2008;83:220-223. doi: 10.1189/jlb.0407198. <https://www.ncbi.nlm.nih.gov/pubmed/17962369>.
- Kordi Tamandani DM, Sobti RC and Shekari M. Association of Fas670 gene polymorphism with risk of cervical cancer in North Indian population. *Clin Exp Obstet Gynecol*. 2008;35(3):183-186. PMID: 18754288. <https://www.ncbi.nlm.nih.gov/pubmed/18754288>.
- Nunobiki O, Ueda M, Toji E, Yamamoto M, Akashi K, Sato N, Izuma S, Torii K, Tanaka I, Okamoto Y and Noda S. Genetic polymorphism of cancer susceptibility genes and HPV infection in cervical carcinogenesis. *Patholog Res Int*. 2011;364069:1-8. doi: 10.4061/2011/364069. <https://www.ncbi.nlm.nih.gov/pmc/articles/PMC3108378/>.
- Huang Q, Wang J and Hu Y. FAS-670 gene polymorphism and cervical carcinogenesis risk: A meta-analysis. *Biomed Rep*. 2013;1:889-894. doi: 10.3892/br.2013.159. <https://www.ncbi.nlm.nih.gov/pmc/articles/PMC3916992/>.
- Parwanto MLE, Wratsangka R, Guyansyah A, and Anggraeni K. Mutation on the Fas-promoter-670 gene, AA to GA in the normal cervix-epithelial-cells of high risk Indonesian mother: A case report. *Bali Med J*. 2019;8(1):360-364. doi: 10.15562/bmj.v%vi%l1313. <https://www.balimedicaljournal.org/index.php/bmj/article/view/1313>.
- Kalantar E, Assadi M, Pormazaheri H, Hatami S, Barari MA, Asgari E, Mahmoudi E, Kabir K and Marashi SMA. Candida non albicans with a high amphotericin B resistance pattern causing Candidemia among cancer patients. *Asian*

- Pac J Cancer Prev. 2014;15(24):10933-10935. doi: [10.4103/0973-1482.157307](https://doi.org/10.4103/0973-1482.157307). http://journal.waocp.org/?action=article&vol=3333&page=3&max_rows=25.
17. Friedman DZP and Schwartz IS. Emerging fungal infections: new patients, new patterns, and new pathogens. J Fungi. 2019;5(67):1-19. doi: [10.3390/jof5030067](https://doi.org/10.3390/jof5030067). <https://www.ncbi.nlm.nih.gov/pubmed/31330862>.
 18. Iranparast S, Assarchadegan MA, Heike Y, Hossienzadeh M and Khodadadi A. Wilms' tumor gene (WT1) expression correlates with vascular epithelial growth factor (VEGF) in newly acute leukemia patients undergoing chemotherapy. Asian Pac J Cancer Prev. 2014;15:9217-23. <https://europepmc.org/article/med/25422204>.
 19. Okodo M, Okayama K, Fukui T, Shiina N, Caniz T, Yabusaki H, and Fujii M. Significance of compression binucleation while differentiating reactive cellular changes between human Papillomavirus and *Candida* infections. Asian Pac J Cancer Prev. 2017;18(9):2507-2511. doi: [10.22034/APJCP.2017.18.9.2507](https://doi.org/10.22034/APJCP.2017.18.9.2507). <http://journal.waocp.org/index.php?action=article&au=170739&au=Okodo,%20Mitsunaki>.
 20. Washiya K, Motoi M, Kobayashi T, Yoshioka H and Watanabe J. Significance of binucleated cells with compression in atypical squamous cells of undetermined significance. Acta Cytol. 2013;57:599-603. doi: [10.1159/000353802](https://doi.org/10.1159/000353802). <https://www.ncbi.nlm.nih.gov/pubmed/24107589>.
 21. Gupta SM, and Mania-Pramanik J. Molecular mechanisms in progression of HPV-associated cervical carcinogenesis. J Biomed Sci. 2019;26(28):1-19. doi: [10.1186/s12929-019-0520-2](https://doi.org/10.1186/s12929-019-0520-2). <https://jbiomedsci.biomedcentral.com/track/pdf/10.1186/s12929-019-0520-2>.
 22. Sabeena S, Kuriakose S, Binesh D, Abdulmajed J, Dsouza G, Ramachandran A, Vijaykumar B, Aswathyraj S, Devadiga S, Ravishankar N and Arunkumar G. The utility of urine-based sampling for cervical cancer screening in low-resource settings. Asian Pac J Cancer Prev. 2019;20(8):2409-2413. doi: [10.31557/APJCP.2019.20.8.2409](https://doi.org/10.31557/APJCP.2019.20.8.2409). http://journal.waocp.org/article_88688.html.
 23. Menon S, Broeck DV, Rossi R, Ogbe E, Harmon S and Mabeya H. Associations between vaginal infections and potential high-risk and high-risk human Papilloma virus genotypes in female sex workers in Western Kenya. Clin Ther. 2016;38(12):2567-2577. doi: <https://doi.org/10.1016/j.clinthera.2016.10.005>. [https://www.clinicaltherapeutics.com/article/S0149-2918\(16\)30777-9/fulltext](https://www.clinicaltherapeutics.com/article/S0149-2918(16)30777-9/fulltext).
 24. Chan CK, Aimagambetova G, Ukybassova T, Kongraty K and Azizan A. Human Papillomavirus infection and cervical cancer: Epidemiology, screening, and vaccination review of current perspectives. J Oncol. 2019;3257939:1-11. <https://www.hindawi.com/journals/jo/2019/3257939/cta/>.
 25. Lismidiati W, Emilia O and Widiyati W. Need vs. financing capability: Human Papillomavirus vaccinations among adolescents. Asian Pac J Cancer Prev. 2019;20(10):2959-2964. doi: [10.31557/APJCP.2019.20.10.2959](https://doi.org/10.31557/APJCP.2019.20.10.2959). <http://journal.waocp.org/?action=article&kw=63610&kw=HPV>.
 26. Ueda M, Hung YC, Terao Y, Yamaguchi H, Saito J, Nunobiki O, Noda S and Uekia M. Fas gene promoter-670 polymorphism in gynecological cancer. Int J Gynecol Cancer. 2006;16(1):179-182. <https://doi.org/10.1016/j.ygyno.2005.04.001>. <https://www.sciencedirect.com/science/article/abs/pii/S0090825805002441>.
 27. Zucchi E, da Silva ID, Ribalta JC, de Souza NC, Speck NM, Girão MJ, Brenna SM, and Syrjänen KJ. Fas/CD95 promoter polymorphism gene and its relationship with cervical carcinoma. Eur J Gynaecol Oncol. 2009;30(2):142-144. PMID: 19480241. <https://www.ncbi.nlm.nih.gov/pubmed/19480241>.
 28. Pavlidou E, Daponte A, Egea R, Dardiotis E, Hadjigeorgiou GM, Antonio Barbadilla A and Agorastos T. Genetic polymorphisms of FAS and EVER genes in a Greek population and their susceptibility to cervical cancer: a case control study. BMC Cancer. 2016;16(923):1-7. doi: [10.1186/s12885-016-2960-3](https://doi.org/10.1186/s12885-016-2960-3). https://www.ncbi.nlm.nih.gov/pmc/articles/PMC5129199/pdf/12885_2016_Article_2960.pdf.
 29. Farhan MA, Moharram AM, Salah T and Shaaban OM. Types of yeasts that cause vulvovaginal candidiasis in chronic users of corticosteroids. Med Mycol. 2019;57(6):681-687. <https://doi.org/10.1093/mmy/myy117>. <https://academic.oup.com/mmy/article-abstract/57/6/681/5242116>.
 30. Parkpinyo N, Inthasorn P, Laiwejpithaya S and Punnat T. Benefits of Cervical Cancer Screening by Liquid-Based Cytology as Part of Routine Antenatal Assessment. Asian Pac J Cancer Prev. 2016;17(9):4457-4461. doi: <https://doi.org/10.7314/APJCP.2016.17.9.4457>. <https://pdfs.semanticscholar.org/bc32/63f9284df9ebc2841f821f8f826b65e/cc85.pdf>.
 31. Brandolt TM, Klafke GB, Gonçalves CV, Bitencourt LR, de Martinez AMB, Mendes JE, Meireles MCA and Xavier MO. Prevalence of *Candida* spp. in cervical-vaginal samples and the in vitro susceptibility of isolates. Braz J Microbiol. 2017;48:145-150. <http://www.bjmicrobiol.com.br/>.
 32. Bitew A and Abebaw Y. Vulvovaginal candidiasis: species distribution of *Candida* and their antifungal susceptibility pattern. BMC Women's Health. 2016;18(94):1-10. <https://doi.org/10.1186/s12905-018-0607-z>. <https://bmcwomenshealth.biomedcentral.com/track/pdf/10.1186/s12905-018-0607-z>.
 33. Swidergall M, Khalaji M, Solis NV, Moyes DL, Drummond RA, Hube B, Lionakis MS, Murdoch C, Filler SG, and Naglik JR. Candidalysin is required for neutrophil recruitment and virulence during systemic *Candida albicans* infection. JID. 2019;220 (November 1):1477-1488. <https://doi.org/10.1093/infdis/jiz322>. <https://academic.oup.com/jid/article/220/9/1477/5546010>.
 34. Sabu S, Nayak DN, Nair S and Shetty R. Role of Papanicolaou smear in the diagnosis of pathologic flora in asymptomatic patients in rural health care set-up. JCDR. 2017;11(10): EC10-EC13, 2017. doi: [10.7860/JCDR/2017/25044.10733](https://doi.org/10.7860/JCDR/2017/25044.10733). https://jcd.net/article_fulltext.asp?issn=0973709x&year=2017&volume=11&issue=10&page=EC10&issn=0973-709x&id=10733.
 35. Nishimura K, Watanabe S, Hayashida R, Sugishima S, Iwasaka T, and Kaku T. Binucleated HeLa cells are formed by cytokinesis failure in starvation and keep the potential of proliferation. Cytotechnology. 2016;68(4):1123-1130. doi: [10.1007/s10616-015-9869-6](https://doi.org/10.1007/s10616-015-9869-6). <https://www.ncbi.nlm.nih.gov/pubmed/25894790>.
 36. Liu Y, Cao C, Zhai P and Zhang Y. Biological characteristics of cervical precancerous cell proliferation. Open Med. 2019;14:362-368. <https://doi.org/10.1515/med-2019-0036>. <https://www.degruyter.com/view/j/med.2019.14.issue-1/med-2019-0036/med-2019-0036.xml>



This work is licensed under a Creative Commons Attribution

The change of cell biometric and its nucleus on cervical-squamous-epithelial-cell with GA genotype of Fas-promoter-670 gene, high-risk human papillomavirus and Candida species infection: a case report

by Kirana Anggareni

Submission date: 27-Feb-2024 03:50PM (UTC+0700)

Submission ID: 2305823617

File name: Jurnal_2_word.docx (606.94K)

Word count: 5170

Character count: 31929

ABSTRACT

Background: Cervical samples of patients with human papillomavirus (HPV) infections show positive results in HPV DNA testing. HPV infection can alter cervical squamous epithelial cells (CSECs) to be abnormal. Epigenetically, CSECs that change to be abnormal are affected by Fas-promoter-670 gene polymorphism. High-risk HPV (hr-HPV) patients can be infected by other microbes, for example, *Candida* species (*Candida* sp.). The present study's purpose was to show CSEC biometrics based on epigenetics of the Fas-promoter-670 gene polymorphism in Indonesian women with hr-HPV and *Candida* sp. infection. Biometric quantification was performed based on the following analysis of CSECs.

Case report: Indonesian hr-HPV women at the age of 28 years, with *Candida* sp. infection, underwent a Pap smear examination on April 21st, 2016, using the ThinPrep method, and a blood test was also performed using the cubital vein. Blood and ThinPrep samples were examined for the Fas-promoter-670 gene polymorphism. Epigenetically, the subjects had the GA genotype of the Fas-promoter-670 gene in the blood and ThinPrep samples. Patients with *Candida* sp. infection in the early stages were characterized by the appearance of polymorphonuclear leukocytes (PMN), whereas those in advanced stages presented without PMN on the hyphae. CSEC biometric measurements were performed quantitatively using mononuclear CSECs (mn-CSECs) and binucleated CSECs (bn-CSECs).

Conclusion: Biometric measurements of the CSECs were performed quantitatively and assessed the length, width, area and perimeter of the cell and its nuclei. Cell length, cell width, nucleus area, nucleus perimeter and nucleus length index were significantly different between the mn-CSECs, the 1st nucleus of bn-CSECs and 2nd nucleus of bn-CSECs ($P < 0.05$).

INTRODUCTION

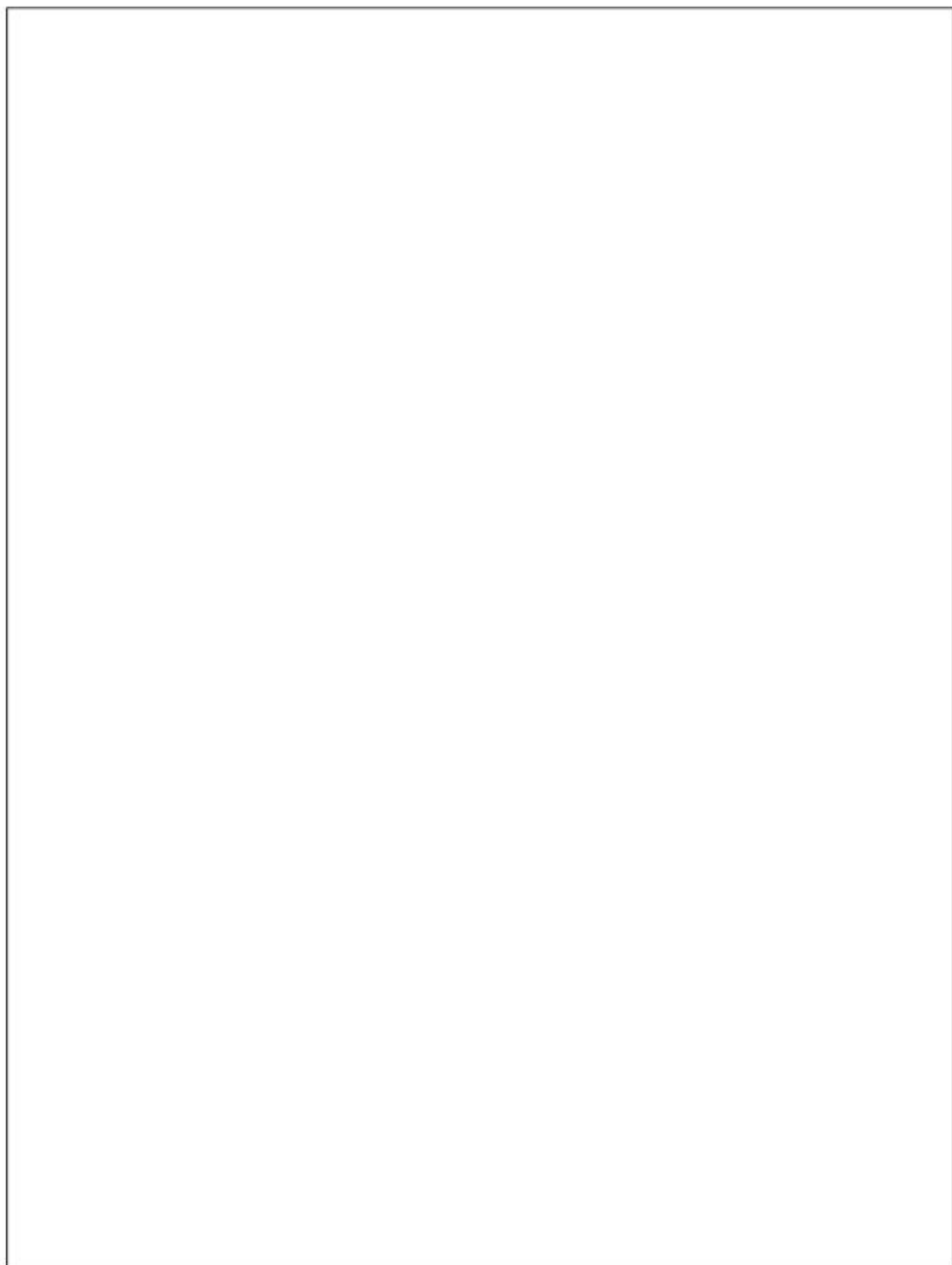
The ThinPrep Pap test can be used to identify precancerous lesions in patients to facilitate early detection to manage cervical cancer. ThinPrep Pap tests are currently the gold standard in liquid-based cytology testing, and their use is greatly improved compared with conventional Pap technology.¹ It has been demonstrated that the ThinPrep Pap test has high sensitivity and high specificity in

screening for cervical cancer.²

Precancerous cervical lesions are strongly associated with high-risk human papillomavirus (hr-HPV) infection. It has been demonstrated that persistent infection with high-risk types of HPV is the most significant factor for cervical cancer and precancerous lesion manifestation.³ A previous study has reported the incidence and mortality of cervical cancer and their relationship with the human

development index in 185 countries globally. Furthermore, screening methods include cytology (Papanicolaou test) and HPV testing, alone or in combination.⁴ However, HPV infection is not the only factor for the development of cervical cancer.⁵ Genetic and environmental factors are also associated with the development of cervical cancer.

APO-1/Fas (CD95/TNFRSF6) receptor is a type I transmembrane glycoprotein



that belongs to the tumor necrosis factor (TNF) or neuronal growth factor receptor superfamily.⁸ The human Fas-promoter-670 gene has been mapped and is located at chromosome 10q24.1⁹ or 10.23.⁸ This gene consists of 9 exons and eight introns. Exon 1 comprises the 5'-untranslated region (UTR) and DNA sequence for the first ten amino acids. Exons 2-5 encode the extracellular region, while exon 6 encodes the transmembrane region. Exons 7 and 8 encode the 36 amino acids of the membrane-proximal cytoplasmic receptor. Exon 9 encodes the remaining 109 amino acids, including the 'death domain' and the 3'-UTR.⁸

The Fas-promoter-670 gene plays a central role in programmed cell death's physiological regulation (also termed apoptosis). Failure of this gene's regulation produces a death signal reported in several types of cancer.¹⁰ It has been reported that a single nucleotide polymorphism at site 670 in the Fas gene's enhancer region is associated with tumorigenesis.¹¹ A study has demonstrated an association between Fas-promoter-670 gene polymorphism and cervical cancer. A statistically significant correlation was identified between the susceptibility for cervical cancer and the GA and combined GA+GG genotypes in a study focused on an Indian population.¹² An association between Fas-promoter-670 gene polymorphism and HPV infection has also been shown in Japan's cervical cancer.¹³ Another study in Asia has also demonstrated a positive association between Fas-promoter-670 gene polymorphism and cervical cancer.¹⁴ Additionally, a previous study has reported a case of a high-risk Indonesian mother, whose Fas-promoter-670 gene in normal CSECs was mutated from AA to GA, whereas in the lymphocyte cells, the genotype was AA.¹⁵

A previous study has reported that the *Candida species* (*Candida sp.*) is of great concern due to its human hosts' infection, particularly patients with cancer.¹⁶ Invasive candidiasis is a serious infection that predominantly affects critically ill and immunocompromised patients. In general, *Candida albicans* is a species that is involved in this infection.¹⁷ Furthermore, it has been stated that cancer patients have a greater risk for serious infections, such as

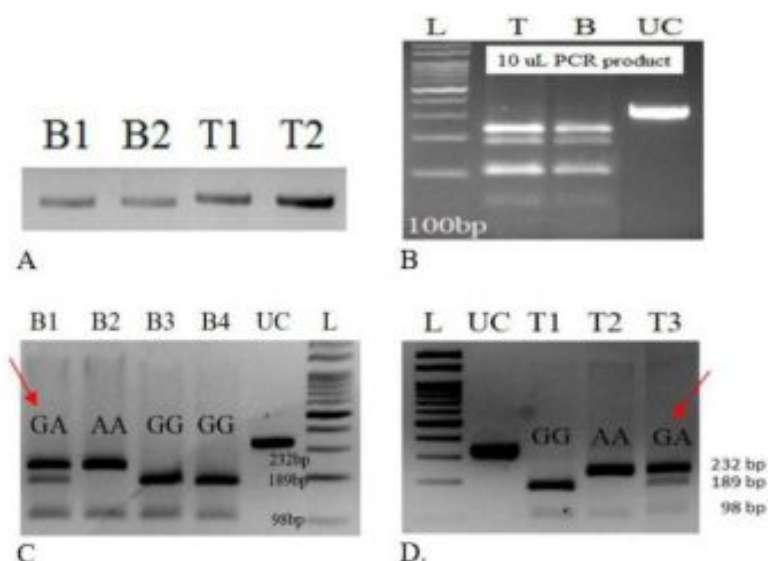


Figure 1. Detection of Fas-promoter-670 gene G/A polymorphism in blood and CSECs. (A) DNA extraction from blood and CSECs samples. (B). Optimization of restriction fragment length polymorphism from the ThinPrep Pap test of CSECs and blood samples with BstN1 enzyme. L, molecular weight marker; T, ThinPrep CSEC sample; B, blood sample; UC, running sample without BstN1 enzyme. (C) Genotyping of the Fas-promoter-670 gene from the blood sample. B1-B4, sample number; UC, running sample without BstN1 enzyme; L, molecular weight marker. The three possible genotypes were defined by three distinct patterns: AA (232, 98 bp), GA (232, 189, 98 bp), and GG (189, 98 bp). The subject, in this case, had the GA genotype of the Fas-promoter-670 gene (red arrow, B1 sample). (D) Genotyping of the Fas-promoter-670 gene from the ThinPrep CSEC sample. L, molecular weight marker; UC, running sample without BstN1 enzyme; T1-T3, sample number. The three possible genotypes were defined by three distinct patterns: AA(232, 98 bp), GA(232, 189, 98 bp), and GG (189, 98 bp). The subject, in this case, had the GA genotype of the Fas-promoter-670 gene (red arrow, T3 sample). CSEC, cervical squamous epithelial cell; PCR, polymerase chain reaction; bp, base pair.

Candida sp. Patients with candidemia have a serious problem due to high mortality, particularly if resistant *Candida spp.* cause it.¹⁸

Binucleation of CSECs in patients with *Candida sp.* infection has been reported. It has been stated that binucleation is a reactive cellular change in Pap smears due to *Candida* infection.¹⁹ A study result previously indicated an effect of HPV infection on the number of nuclei in CSECs. Following HPV infection, the appearance of CSECs on the ThinPrep Pap slide demonstrates a different number of nuclei, exhibiting ≥ 1 nucleus. In the

cells with >1 nucleus, if the nuclei pressed against each, they were defined as positive compression. The nuclei contacting but not pressing against each other were defined as negative compression.²⁰ It has been reported that positive compression of binucleated cells may be present due to hr-HPV infection, which is caused due to inflammation in intraepithelial lesions or malignancy cases infected with *Candida sp.*¹⁸ The present report evaluates CSEC biometrics' performance and its nuclei with a GA genotype of the Fas-promoter-670 gene in who has hr-HPV and *Candida sp.* infection.

CASE REPORT

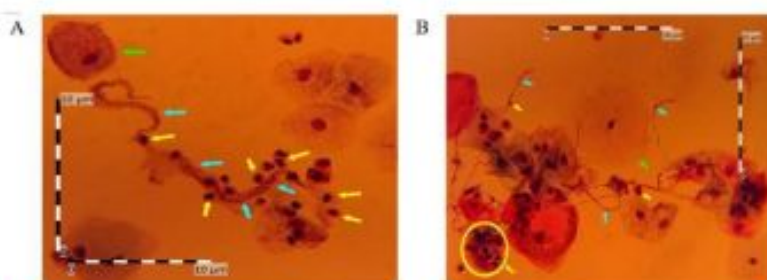


Figure 2. The appearance of CSEC and hyphae of *Candida sp.* in the subject with high-risk HPV and *Candida sp.* infection. (A) mn-CSEC (lime arrow) in the subject with high-risk HPV and *Candida sp.* infection in the early stage. The aqua arrow indicates hyphae and the yellow arrow indicates the polymorphonuclear leukocyte. Magnification, 400x. (B) mn-CSEC (lime arrow) in the subject with high-risk HPV and *Candida sp.* infection in the advanced stage. The aqua arrow indicates hyphae and the yellow arrow indicates a spore. Magnification 400x. mn-CSEC, mononucleated cervical squamous epithelial cell; CSEC, cervical squamous epithelial cell.

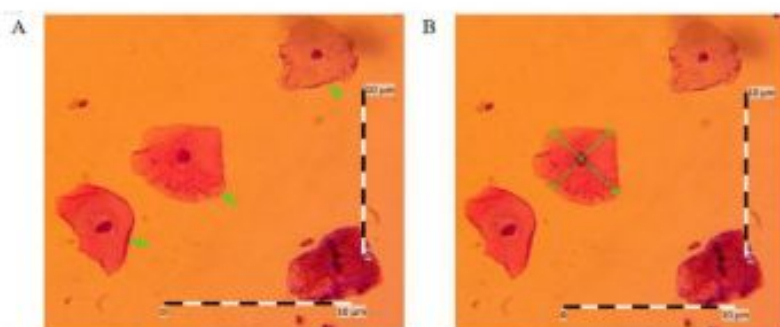


Figure 3. The appearance of mn-CSECs in the subject with high-risk HPV and *Candida sp.* infection. (A) The appearance of mn-CSECs available for measurement (lime arrow). Magnification, 400x. (B) Cell length and cell width measurements result of mn-CSECs. Magnification 400x. mn-CSEC, mononucleated cervical squamous epithelial cell.

CASE REPORT

A 28-year-old Indonesian woman living with hr-HPV and *Candida sp.* infection on April 21st, 2016, underwent a Pap smear examination and a blood test. Before participating in this study, the participant provided informed consent. Ethical approval for the study was obtained from the "Komisi Etik Riset Fakultas Kedokteran, Universitas Trisakti, Indonesia" (approval no. 60/KER/FK/05/2013). Informed written consent was obtained from participants before data collection. The subject concerned was included in

the community of Indonesian women living with hr-HPV based on laboratory examinations. In this case, the subject first has coitus at the age of 16 years, had free sex, and never received HPV vaccination.

Blood samples (~10 µl) were taken from a cubital vein are inserted into an ethylene diamine tetraacetate (EDTA) tube. The Pap smear examination was performed according to the ThinPrep method to collect cytological material. Whole blood in the EDTA tube and cytological material in the ThinPrep solution was analyzed for Fas-promoter-670 gene polymorphisms by restriction fragment

length polymorphism (RFLP) *Bacillus stearothermophilus* N1 (BstN1) enzyme. DNA extraction from the blood and ThinPrep samples was performed using chloroform. In addition, the forward primer, 5'CTACCTAAGAGCTA TCTACCGTTC3' and reverse primer, 5'GGCTGTCCATGTTGGCTGC3' were used. Epigenetically, the subject, in this case, had the GA genotype of the Fas-promoter-670 gene both in the blood and ThinPrep samples (Figure 1).

In addition to analyzing the Fas-promoter-670 gene polymorphism, cytological material in the ThinPrep solution was also analyzed cytologically. ThinPrep 2000 was used to create slides automatically based on liquid-based cervical cytology. Three observers used Optilab Advance Plus and Image Raster 3 programs (PT MICONOS, Daerah Istimewa Yogyakarta, Indonesia (<https://miconos.ac.id/new/support/download>)).

The presence of *Candida sp.* was based on the observation of hyphae under the microscope. *Candida sp.* infection can be divided into two stages, termed the early and advanced stages. *Candida sp.* infection in the early stage is characterized by polymorphonuclear leukocytes (PMNs), whereas at the advanced stage, no PMNs are observed on the hyphae of *Candida sp.* The spores of *Candida sp.* were observed qualitatively (Figure 2). The biometric measurements of CSECs were performed quantitatively, focusing on the length, width, area and perimeter of the cell and its nuclei. Optilab plus and Image Raster 3 programs were used to analyze the biometric measurements by three observers. The measurements of the mononucleated-CSECs (mn-CSECs) (Figure 3) and binucleated-CSECs (bn-CSECs) (Figure 4) were as follows: Cell length (CL), cell width (CW), cell area (CA), cell perimeter (CP), nucleus length (NL), nucleus width (NW), nucleus area (NA), nucleus perimeter (NP), nucleus length index (NLI), nucleus width index (NWI), nucleus area index (NAI) and nucleus perimeter index (NPI). Based on the results of biometric measurements, CSECs in these cases were divided into three groups: i) mn-CSEC; 1st nucleus of bn-CSEC (1st-bn-CSEC); and iii) 2nd nucleus of bn-CSEC (2nd-bn-CSEC).

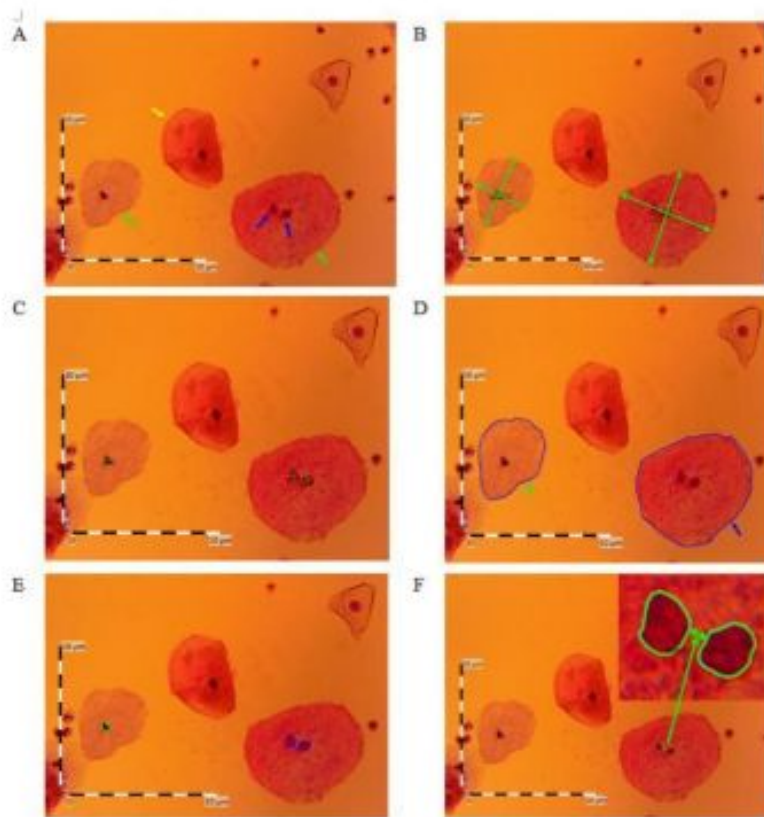


Figure 4. Comparison between mn-CSECs and bn-CSECs in the subject with high-risk HPV and *Candida sp.* infection. (A) The appearance of mn-CSECs available for measurement (lime arrow) compared with mn-CSECs not available for measurement (yellow arrow) and bn-CSECs available for measurement (blue arrow). Magnification, 400x. (B) Comparison of cell length and cell width between mn-CSECs and bn-CSECs. Magnification 400x. (C) Comparison of nucleus length and nucleus width between mn-CSECs and bn-CSECs. Magnification, 400x. (D) Cell area and cell perimeter of mn-CSECs (lime arrow) and bn-CSECs (blue arrow). Magnification 400x. (E) Nucleus area and nucleus perimeter of mn-CSECs (lime polygon) and bn-CSECs (blue polygon). Magnification 400x. (F) Compression of bn-CSECs demonstrated that nuclei are not pressing against each other. Magnification 400x. mn-CSEC, mononucleated cervical squamous epithelial cell; bn-CSEC, binucleated cervical squamous epithelial cell.

which are presented in Table 1. The CL, CW, NA, NP and NLI were not significantly different between the mn-CSECs, 1st-bn-CSECs and 2nd-bn-CSECs ($P>0.05$); however, CA, CP, NL, NW, NAI, NPI and NWI were significantly different ($P<0.05$). Multiple comparisons between the mn-CSECs, 1st-bn-CSECs and 2nd-bn-CSECs are presented in Table 2. The CA

and CP in mn-CSECs, 1st-bn-CSECs and 2nd-bn-CSECs were significantly different ($P<0.05$); however, 1st-bn-CSECs was not significantly different compared with 2nd-bn-CSECs ($P>0.05$). The NL and NW of mn-CSECs were significantly different compared with those of the 1st-bn-CSECs, as well as for 1st-bn-CSECs compared with 2nd-bn-CSECs ($P<0.05$), while mn-CSECs

were not significantly different compared with 2nd-bn-CSECs ($P>0.05$). The NAI and NPI were significantly different between the mn-CSECs and 1st-bn-CSECs or 2nd-bn-CSECs ($P<0.05$); however, they were not significantly different for the 1st-bn-CSECs compared with the 2nd-bn-CSECs ($P>0.05$). The NWI of mn-CSECs was significantly different from that of the 1st-bn-CSECs, and the NWI of 1st-bn-CSECs was significantly different compared with that of the 2nd-bn-CSECs ($P<0.05$). Simultaneously, mn-CSECs did not significantly differ compared with 2nd-bn-CSECs in terms of NWI ($P>0.05$).

DISCUSSION

DNA extraction from CSECs and leukocytes is useful for the genotyping of the Fas-promoter-670 gene and electrophoresis optimization. Genotyping of the Fas-promoter-670 gene in CSECs and leukocytes reveals that both have a GA genotype. To evaluate the exposure of HPV infection on the Fas-promoter-670 gene in CSECs, genotyping is necessary for both CSECs and leukocytes. The genotyping result of the Fas-promoter-670 gene in both CSECs and leukocytes of the present case demonstrated the same result, suggesting that the Fas-promoter-670 gene in CSECs does not mutate due to HPV infection. That is in contrast to a previous case in which the Fas-promoter-670 gene in the CSECs had a GA genotype, whereas had an AA genotype in the leukocytes. Therefore the Fas-promoter-670 gene in CSECs had mutated.¹³ This demonstrates that the Fas-promoter-670 gene in CSECs mutates due to the effect of HPV infection (local infection). We know that HPV infection is a local infection that is in the cervix.

The previous study results indicated that persistent HPV infection is necessary for the development of cervical cancer. Furthermore, it stated that genetic and epigenetic alterations in host cell genes are crucial for preventing cervical precancerous lesions to invasive cancer.²¹ A recent study has reported that samples collected from patients with cervical cancer tested positive for HPV DNA.²² Additionally, a study in Western Kenya also demonstrated associations between vaginal infections and potentially high

CASE REPORT

Table 1. Comparison of cell biometric and its nuclei between mn-CSEC and bn-CSEC in Indonesian women living with high-risk HPV and *Candida sp.* infection

Variable	mn-CSEC mean \pm SD (n cell=27)	1 st nucleus of bn-CSEC mean \pm SD (n cell=6)	2 nd nucleus of mn-CSEC mean \pm SD (n cell=6)	P value
CL (μ m)	5.44 \pm 0.31	5.72 \pm 0.61	5.73 \pm 0.26	0.900
CW (μ m)	4.49 \pm 0.29	4.47 \pm 0.28	4.76 \pm 0.13	0.930
CA (μ m ²)	20.45 \pm 1.23	25.45 \pm 2.78	25.61 \pm 0.71	0.000
CP (μ m)	16.67 \pm 1.09	18.64 \pm 1.72	19.30 \pm 0.96	0.000
NA (μ m ²)	0.47 \pm 0.05	0.45 \pm 0.04	0.45 \pm 0.03	0.403
NP (μ m)	2.50 \pm 0.26	2.44 \pm 0.29	2.46 \pm 0.10	0.835
NL (μ m)	0.83 \pm 0.08	0.76 \pm 0.09	0.89 \pm 0.05	0.034
NW (μ m)	0.63 \pm 0.06	0.72 \pm 0.05	0.62 \pm 0.09	0.014
NAI	2.31 \pm 0.24	1.79 \pm 0.14	1.74 \pm 0.11	0.000
NPI	15.05 \pm 1.78	13.11 \pm 1.28	12.77 \pm 1.03	0.003
NLI	15.36 \pm 1.83	13.50 \pm 2.26	15.59 \pm 1.08	0.074
NWI	14.20 \pm 1.68	16.17 \pm 2.12	12.98 \pm 1.92	0.012

Abbreviations: mn-CSEC, mononucleated cervical-squamous-epithelial-cell; bn-CSEC, binucleated cervical-squamous-epithelial-cell; 1st nucleus of bn-CSEC, first nucleus of binucleated-cervical squamous epithelial cell; 2nd nucleus of bn-CSEC, second nucleus of binucleated cervical-squamous-epithelial-cell; SD, standard of deviation; n, sample size; p, significant level; CL, cell length (the longest cell diagonal that passes through the nucleus); CW, cell width (cell diagonal perpendicular to the diagonal of CL); CA, cell area; CP, cell perimeter; NA, nucleus area; NP, nucleus perimeter; NL, nucleus length (the longest cell nucleus diagonal); NW, nucleus width (cell nucleus diagonal perpendicular to the diagonal of NL); NAI, nucleus area index (nucleus area:cell area) \times 100; NPI, nucleus perimeter index (nucleus perimeter:cell perimeter) \times 100; NLI, nucleus length index (nucleus length:cell length) \times 100; NWI, nucleus width index (nucleus width:cell width) \times 100; μ m, milli-micron; μ m², milli-micron square.

risk and hr-HPV genotypes. In detail, of the free sex workers analyzed, 33.3% had HIV, and 57.7% harbored a potential hr-HPV and hr-HPV genotype.²³ Based on numerous studies worldwide, the epidemiology of HPV infection and the oncogenic properties of HPV type are different from HPV genotypes. However, there are still many countries where population-based prevalence has not yet been identified. Furthermore, cervical cancer screening strategies are different between countries.²⁴

The results presented in the present case report are consistent with the results of recent research in Indonesia, which shows that HPV vaccination is not yet a priority for adolescents. This result is due to a lack of education and the cost of HPV vaccination. Therefore a program is required to provide accurate information regarding HPV vaccination to the public, particularly teenagers.²⁵

This case is consistent with studies of the Japanese population, which demonstrated that a GG genotype is associated with an increased risk for cervical cancer development, with an odd ratio (OR) of 2.56 compared to the AA genotype. Furthermore, the G allele in the GA or GG

genotype also increased the risk of cervical cancer, with an OR of 1.60.²⁶ Other studies investigating females in Northern India demonstrated that a GA genotype and a combination of GA and GG genotype significantly increased the risk of cervical cancer compared with an AA genotype.¹² Also, a study of Brazilian females <48 years old also reported that a GA genotype increases the risk of cervical cancer 5-fold compared with an AA genotype.²⁷

Research of a Greek population demonstrated no significant association between EVER1/2 polymorphisms (rs2290907 and rs16970849) and cervical cancer. However, the study provided additional data that suggested no association between the FAS polymorphism (rs1800682) and the susceptibility to persistent precancerous lesions and cervical cancer. Current literature for EVER1/2 polymorphisms and cervical cancer is very limited worldwide. Therefore, prospective studies are needed to clarify this point further.²⁸

Candida sp., the most common *Candida albicans*, plays an important role in the vaginal and vulvar epithelium's secondary infections. *Candida sp.* is part of the normal flora in women and is

often asymptomatic.²⁹ In a study based in Brazil, which investigated 633 pregnant women, 158 specimens (24.1%) exhibited pathogenic infections, while 22.9% were infected with *Candida spp.*³⁰ A subsequent study in Brazil demonstrated that of the 263 patients analyzed, *Candida spp.* was isolated in 27%, and >60% of the isolates were identified as *Candida albicans*. Also, *Candida non-albicans* were isolated at 8.6% in symptomatic patients and 14.3% in asymptomatic patients.³¹ Another study in Ethiopia reported a high prevalence rate of vulvovaginal candidiasis and *Candida non-albicans*. Therefore it is important to conduct continuous epidemiological surveys to measure species distribution changes from *C. albicans* to *Candida non-albicans*.³² A study in West Kenya demonstrated that bacterial vaginosis was the most common infection (48.3%), followed by *Trichomonas vaginalis* (31.4%) and *Candida spp.* (19.9%). Significant associations between bacterial vaginosis and HPV 58 and between *Candida spp.* and HPV 16 and HPV 53 suggest the need for sexually transmitted disease management in a cervical cancer prevention program.³³

The appearance of PMN on hyphae of *Candida sp.* in the early stage indicates an

Table 2. Multiple comparisons between mn-CSEC, 1stn-bn-CSEC and 2ndn-bn-CSEC in Indonesian women living with high-risk HPV and *Candida sp.* infection

Variable	Group	p-value
CA (μm^2)	mn-CSEC - 1 st n-bn-CSEC	0.000
	mn-CSEC - 2 nd n-bn-CSEC	0.000
	1 st n-bn-CSEC - 2 nd n-bn-CSEC	0.848
CP (μm)	mn-CSEC - 1 st n-bn-CSEC	0.001
	mn-CSEC - 2 nd n-bn-CSEC	0.000
	1 st n-bn-CSEC - 2 nd n-bn-CSEC	0.336
NL (μm)	mn-CSEC - 1 st n-bn-CSEC	0.069
	mn-CSEC - 2 nd n-bn-CSEC	0.115
	1 st n-bn-CSEC - 2 nd n-bn-CSEC	0.010
NW (μm)	mn-CSEC - 1 st n-bn-CSEC	0.007
	mn-CSEC - 2 nd n-bn-CSEC	0.527
	1 st n-bn-CSEC - 2 nd n-bn-CSEC	0.009
NAI	mn-CSEC - 1 st n-bn-CSEC	0.000
	mn-CSEC - 2 nd n-bn-CSEC	0.000
	1 st n-bn-CSEC - 2 nd n-bn-CSEC	0.714
NPI	mn-CSEC - 1 st n-bn-CSEC	0.012
	mn-CSEC - 2 nd n-bn-CSEC	0.004
	1 st n-bn-CSEC - 2 nd n-bn-CSEC	0.724
NWI	mn-CSEC - 1 st n-bn-CSEC	0.019
	mn-CSEC - 2 nd n-bn-CSEC	0.141
	1 st n-bn-CSEC - 2 nd n-bn-CSEC	0.004

Abbreviations: mn-CSEC, mononucleated cervical-squamous-epithelial-cell; 1stn-bn-CSEC, first nucleus of binucleated cervical-squamous-epithelial-cell; 2ndn-bn-CSEC, second nucleus of binucleated cervical-squamous-epithelial-cell; p, significant level; CL, cell length (the longest cell diagonal that passes through the nucleus); CW, cell width (cell diagonal perpendicular to the diagonal of CL); CA, Cell area; CP, Cell perimeter; NA, nucleus area; NP, nucleus perimeter; NL, Nucleus length (the longest cell nucleus diagonal); NW, nucleus width (cell nucleus diagonal perpendicular to the diagonal of NL); NAI, nucleus area index (nucleus area:cell area) $\times 100$; NPI, nucleus perimeter index (nucleus perimeter:cell perimeter) $\times 100$; NLI, nucleus length index (nucleus length:cell length) $\times 100$; NWI, nucleus width index (nucleus width:cell width) $\times 100$; μm , milli-micron; μm^2 , milli-micron square.

infection and allergic reaction. By contrast, in the advanced stage of the infection, *Candida sp.*'s hyphae do not present with PMN. It has also been reported that *Candida sp.* infection produces a peptide toxin called candidalysin. The peptide toxin is produced by hyphae of *Candida albicans* and is characteristic of fungal pathogenesis. Besides, candidalysin is important for *C. albicans* mucosal infections. Candidalysin is known to activate epithelial cells to induce downstream innate immune responses associated with protection during vaginal infections. It has been reported that candidalysin plays an important role in stimulating a strong pro-inflammatory response by neutrophil recruitment. Conversely, if candidalysin is not present, the inflammatory response decreases due to a lack of neutrophil recruitment.³³

Previous studies have shown that *Candida sp.* infects humans, particularly patients with cancer. The present study demonstrated that of the 68 blood samples, 5 (7.35%) were positive for the presence of *Candida spp.*, 2 (40%) identified to be positive for *Candida albicans*, and 3 (60%) were contained *Candida non-albicans*.¹⁶ The results of another study demonstrated that 8.7% of 150 samples were infected with *Candida sp.*³⁴

A recent study reported that ThinPrep cervical cytology samples could be used in cervical cancer screening. There have also been reports of Indonesian mothers with hr-HPV and the Fas-promoter-670 gene in CSECs, mutated from AA to GA, and had normal CSEC characteristics.¹⁸ Based on mn-CSEC and bn-CSEC's appearance, mn-CSEC characteristics, in this case, were normal, while bn-CSECs were

abnormal. This result is consistent with the fact that the abnormality of bn-CSECs is due to cytokinesis failure. Furthermore, cytokinesis failure has the potential for proliferation.³⁵ Based on the results of biometric cell measurements (Tables I and II), there was a change in the size and shape of CSECs. The CA, CP, NL, NW, NAI, NPI, NWI measurements between mn-CSECs, 1stn-bn-CSECs and 2ndn-bn-CSECs were significantly different ($P < 0.05$); however, CL, CW, NA, NP and NLI were not significantly different ($P > 0.05$). The present results and recent studies suggest that the growth rate of precancerous cells is significantly faster compared with normal cervical cells. However, the proliferation capacity of precancerous cells is similar to cervical cancer cells at the molecular level.³⁶

In the Pap smear method, the determination of CSEC characteristics can be used to reference cervical cancer diagnosis. A light microscope and Image Raster 3 are used to analyze CSEC morphology and assess the cell's measurements and its nuclei. Most hospitals in Indonesia have facilities, such as the light microscope. The Image Raster 3 program is easy to obtain. This method may be simplest; however, cervical cancer can also be detected using a more sophisticated tool. The present study, which focused epigenetically on the Fas-promoter-670 gene and two contrasting pathogens, HPV and *Candida sp.*, may improve early screening methods of cervical cancer. Furthermore, the principles of CSEC measurements in this study can be used to develop cervical cytopathology examinations based on 'biometric artificial intelligence'.

CONCLUSION

Biometric measurements of the CSECs were performed quantitatively and assessed the length, width, area and perimeter of the cell and its nuclei. In the case investigated, cell length, cell width, nucleus area, nucleus perimeter and nucleus length index were significantly different between the mn-CSECs, the 1st nucleus of bn-CSECs and 2nd nucleus of bn-CSECs ($P < 0.05$).

DISCLOSURE

Acknowledgments

We thank the leaders and staff of Prodia Laboratories who facilitated the Pap smear examination. Also, thanks are conveyed to the leaders and staff of the Laboratory of Molecular Biology, FKMMK, Universitas Gadjah Mada, Yogyakarta, Indonesia, which facilitated the genotyping examination of the Fas-promoter-670 gene.

Funding

This work was supported in the 4th by the Directorate General of Higher Education, Ministry of Education and Culture of the Republic of Indonesia, by the letter of agreement on the research assignment (grant no. 100/K3/KM/2015; February 23rd, 2015).

Availability Of Data And Materials

The datasets generated and analyzed in the present study are included in this published article.

Authors' Contributions

Mauritius Lambertus Edy Parwanto, Raditya Wratsangka, Assangga Guyansyah and Reza Aditya Digambiro designed the study, collected the samples, carried out the ThinPrep, genetic and cell imaging analysis, participated in the collecting and interpretation of data, wrote the manuscript, and gave the final approval of the version to be published. David Tjahyadi, Hanslavina Arkeman, Kirana Anggraeni, Haryo Ganeca Widyatama, Hosea Jaya Edy and Yosua Jaya Edy carry out the collected and analyzed the data, performed the literature review and wrote the manuscript. All authors read and approved the final manuscript.

Ethics Approval And Consent To Participate

The authors declare that they have obtained written informed consent to publish the details relating to the patient in this report. All possible steps have been taken to safeguard the identity of the patient. This study has ethical clearance by the 'Komisi Etik Riset Fakultas Kedokteran, Universitas Trisakti, Indonesia'.

Patient Consent For Publication

Not applicable.

Competing Interests

The authors declare that they have no competing interests.

REFERENCES

- Hologic. The science of sure. Optima HPV Assay [package insert, AW-14517-001 Rev 001 (EN)], San Diego, CA; Hologic Inc, 2017. <http://www.hologic.ca>.
- Chen H, Shu HM, Chang Z, Wang Z, Yao H, Zhu H, Lu T, Ma Q and Yang B. Efficacy of Pap Test in combination with ThinPrep cytological test in screening for cervical cancer. *Asian Pacific J Cancer Prev*. 2012;13:1651-165. doi: <https://doi.org/10.7314/APJCP.2012.13.4.1651> <https://pdfs.semanticscholar.org/5424/b6db88b67498c13bb5567c467afe6d42533.pdf>.
- National Health Commission of the People's Republic of China. Chinese guidelines for diagnosis and treatment of cervical cancer (English version). *Chin J Cancer Res*. 2019;31(2):295-305. doi: <https://doi.org/10.21147/j.issn.1000-9604.2019.02.04> <https://doi.org/10.21147/j.issn.1000-9604.2019.02.04>.
- Rerucha C, Caro RJ, Vernon L and Wheeler VL. Cervical cancer screening. *Am Fam Physician*. 2018;97(7):441-448. <https://www.aafp.org/afp/2018/0401/p441.html>.
- Sarenac T and Mikov M. Cervical cancer, different treatments and importance of bile acids as therapeutic agents in this disease. *Front Pharmacol*. 2019;10(484):1-29. doi: <https://doi.org/10.3389/fphar.2019.00484> <https://www.frontiersin.org/articles/10.3389/fphar.2019.00484/full>.
- Behrmann I, Walczak H and Krammer PH. Structure of the human APO-1 gene. *Eur J Immunol*. 1994;24:3057-3062. <https://onlinelibrary.wiley.com/doi/abs/10.1002/eji.1830241221>.
- Inazawa J, Itoh N, Abe T and Nagata S. Assignment of the human Fas antigen gene (FAS) to 10q24.1. *Genomics*. 1992;14:821-822. [https://doi.org/10.1016/S0888-7543\(05\)80200-9](https://doi.org/10.1016/S0888-7543(05)80200-9).
- Litcher P, Walczak H, Weitz S, Behrmann I and Krammer PH. The human APO-1 (APT) antigen maps to 10q23: A region that is syntenic with mouse chromosome 19. *Genomics*. 1992;14:179-180. doi: [https://doi.org/10.1016/S0888-7543\(05\)80302-7](https://doi.org/10.1016/S0888-7543(05)80302-7) <https://www.ncbi.nlm.nih.gov/pubmed/1385209>.
- Butler LM, Hewett PJ, Butler WJ, and Cowled PA. Down-regulation of Fas gene expression in colon cancer is not a result of allelic loss or gene rearrangement. *Br J Cancer*. 1998;77:1454-1459. doi: <https://doi.org/10.1038/bjc.1998.239> <https://www.ncbi.nlm.nih.gov/pmc/articles/PMC2150190/>.
- Shimonishi T, Ise K, Shibata F, Aburatani I, Tsuneyama K, Sabit H, Harada K, Miyazaki K and Nakamura Y. Up-regulation of fas ligand at early stages and down-regulation of Fas at progressed stages of intrahepatic cholangiocarcinoma reflect evasion from immune surveillance. *Hepatology*. 2000;32:761-769. doi: <https://doi.org/10.1053/jhep.2000.18192> <https://www.ncbi.nlm.nih.gov/pubmed/11003620>.
- Farre L, Bittencourt AL, Silva-Santos G, Almeida A, Silva AC, Decanin D, Soares GM, Alcantara Jr LC, Van Dooren S, Galva'o-Castro C, Vandamme AM and Van Weyenbergh J. Fas-670 promoter polymorphism is associated to susceptibility, clinical presentation, and survival in adult T cell leukemia. *J Leukocyte Biol*. 2008;83:220-223. doi: <https://doi.org/10.1189/jlb.0407198> <https://www.ncbi.nlm.nih.gov/pubmed/17962369>.
- Kordi Tamandani DM, Sobti RC and Shekari M. Association of Fas670 gene polymorphism with risk of cervical cancer in North Indian population. *Clin Exp Obstet Gynecol*. 2008;35(3):183-186. PMID: 18754288. <https://www.ncbi.nlm.nih.gov/pubmed/18754288>.
- Nunobiki O, Ueda M, Toji E, Yamamoto M, Akashi K, Sato N, Izuma S, Torii K, Tanaka I, Okamoto Y and Noda S. Genetic polymorphism of cancer susceptibility genes and HPV infection in cervical carcinogenesis. *Pathol Res Int*. 2011;364069:1-8. doi: <https://doi.org/10.4061/2011/364069> <https://www.ncbi.nlm.nih.gov/pmc/articles/PMC3108378/>.
- Huang Q, Wang J and Hu Y. Fas-670 gene polymorphism and cervical carcinogenesis risk: A meta-analysis. *Biomed Rep*. 2013;1:889-894. doi: <https://doi.org/10.3892/br.2013.159> <https://www.ncbi.nlm.nih.gov/pmc/articles/PMC3916992/>.
- Parwanto MLE, Wratsangka R, Guyansyah A, and Anggraeni K. Mutation on the Fas-promoter-670 gene, AA to GA in the normal cervix-epithelial-cells of high risk Indonesian mother: A case report. *Bali Med J*. 2019;8(1):360-364. doi: <https://doi.org/10.15562/bmj.v8i1.1313> <https://www.balimedicaljournal.org/index.php/bmj/article/view/1313>.
- Kalantar E, Assadi M, Pormazheri H, Hatami S, Barari MA, Asgari E, Mahmoudi E, Kabir K and Marashi SMA. Candida non albicans with a high amphotericin B resistance pattern causing Candidemia among cancer patients. *Asian*

- Pac J Cancer Prev. 2014;15(24):10933-10935. doi: 10.4103/0973-1482.157307. <http://journal.waocp.org/?action=article&vol=3333&pages=3&maxrows=25>.
17. Friedman DZP and Schwartz IS. Emerging fungal infections: new patients, new patterns, and new pathogens. *J Fungi*. 2019;5(67):1-19. doi: 10.3390/jof5030067. <https://www.ncbi.nlm.nih.gov/pubmed/31330862>.
 18. Iranparast S, Assarehzadegan MA, Heike Y, Hossienzadeh M and Khodadadi A. Wilms' tumor gene (WT1) expression correlates with vascular epithelial growth factor (VEGF) in newly acute leukemia patients undergoing chemotherapy. *Asian Pac J Cancer Prev*. 2014;15:9217-23. <https://europepmc.org/article/med/25422204>.
 19. Okodo M, Okayama K, Fukui T, Shiina N, Caniz T, Yabusaki H, and Fujii M. Significance of compression in binucleation while differentiating reactive cellular changes between human Papillomavirus and *Candida* infections. *Asian Pac J Cancer Prev*. 2017;18(9):2507-2511. doi: 10.22034/APJCP.2017.18.9.2507. <http://journal.waocp.org/index.php?action=article&au=170739&au=Okodo,%20Mitsuki>.
 20. Washiya K, Motoi M, Kobayashi T, Yoshioka H and Watanabe J. Significance of binucleated cells with compression in atypical squamous cells of undetermined significance. *Acta Cytol*. 2013;57:599-603. doi: 10.1159/000353802. <https://www.ncbi.nlm.nih.gov/pubmed/24107589>.
 21. Gupta SM, and Mania-Pramanik J. Molecular mechanisms in progression of HPV-associated cervical carcinogenesis. *J Biomed Sci*. 2019;26(28):1-19. doi: 10.1186/s12929-019-0520-2. <https://biomedsci.biomedcentral.com/track/pdf/10.1186/s12929-019-0520-2>.
 22. Sabeena S, Kurinkose S, Binesh D, Abdulmajeed J, Dsouza G, Ramachandran A, Vijaykumar B, Aswathyraj S, Devadiga S, Ravishankar N and Arunkumar G. The utility of urine-based sampling for cervical cancer screening in low-resource settings. *Asian Pac J Cancer Prev*. 2019;20(8):2409-2413. doi: 10.31557/APJCP.2019.20.8.2409. <http://journal.waocp.org/article/88688.html>.
 23. Menon S, Broeck DV, Rossi R, Ogbe E, Harmon S and Mabeya H. Associations between vaginal infections and potential high-risk and high-risk human Papilloma virus genotypes in female sex workers in Western Kenya. *Clin Ther*. 2016;38(12):2567-2577. doi: <https://doi.org/10.1016/j.clinthera.2016.10.005>. [https://www.clinicaltherapeutics.com/article/S0149-2918\(16\)30777-9/fulltext](https://www.clinicaltherapeutics.com/article/S0149-2918(16)30777-9/fulltext).
 24. Chan CK, Aimagambetova G, Ukybasova T, Kongray K and Azizan A. Human Papillomavirus infection and cervical cancer: Epidemiology, screening, and vaccination-review of current perspectives. *J Oncol*. 2019;3257939:1-11. <https://www.hindawi.com/journals/jo/2019/3257939/cta/>.
 25. Lismidiati W, Emilia O and Widyawati W. Need vs. financing capability: Human Papillomavirus vaccinations among adolescents. *Asian Pac J Cancer Prev*. 2019;20(10):2959-2964. doi: 10.31557/APJCP.2019.20.10.2959. <http://journal.waocp.org/?action=article&kw=63610&kw=HPV>.
 26. Ueda M, Hung YC, Teraia Y, Yamaguchi H, Saito J, Nunobiki O, Noda S and Uekia M. Fas gene promoter-670 polymorphism in gynecological cancer. *Int J Gynecol Cancer*. 2006;16(1):179-182. <https://doi.org/10.1016/j.igyno.2005.04.001>. <https://www.sciencedirect.com/science/article/pii/S0090825805002441>.
 27. Zucchi F, da Silva ID, Ribalta JC, de Souza NC, Speck NM, Girão MJ, Brenna SM, and Syrjänen KJ. Fas/CD95 promoter polymorphism gene and its relationship with cervical carcinoma. *Eur J Gynaecol Oncol*. 2009;30(2):142-144. PMID: 19480241. <https://www.ncbi.nlm.nih.gov/pubmed/19480241>.
 28. Pavlidou E, Daponte A, Egea R, Dardiotis E, Hadjigeorgiou GM, Antonio Barbadilla A and Agorastos T. Genetic polymorphisms of FAS and EVER genes in a Greek population and their susceptibility to cervical cancer: a case control study. *BMC Cancer*. 2016;16(923):1-7. doi: 10.1186/s12885-016-2960-3. <https://www.ncbi.nlm.nih.gov/pmc/articles/PMC5129199/pdf/12885-016-2960-3.pdf>.
 29. Farhan MA, Moharram AM, Salah T and Shaaban OM. Types of yeasts that cause vulvovaginal candidiasis in chronic users of corticosteroids. *Med Mycol*. 2019;57(6):681-687. <https://doi.org/10.1093/mmy/mmy117>. <https://academic.oup.com/mmy/article-abstract/57/6/681/5242116>.
 30. Parkpinyo N, Inthasorn P, Laiwejpithaya S and Punnat T. Benefits of Cervical Cancer Screening by Liquid-Based Cytology as Part of Routine Antenatal Assessment. *Asian Pac J Cancer Prev*. 2016;17(9):4457-4461. doi: <http://dx.doi.org/10.7314/APJCP.2016.17.9.4457>. <https://pdfs.semanticscholar.org/bc32/63f9284df9ebc2841f821f8f9826b65eac85.pdf>.
 31. Brandolt TM, Klafhe GB, Gonçalves CV, Bitencourt LR, de Martinez AMB, Mendes JF, Meireles MCA and Xavier MO. Prevalence of *Candida* spp. in cervical-vaginal samples and the in vitro susceptibility of isolates. *Braz J Microbiol*. 2017;48:145-150. <http://www.bjmicrobiol.com.br/>.
 32. Bitew A and Abebaw Y. Vulvovaginal candidiasis: species distribution of *Candida* and their antifungal susceptibility pattern. *BMC Women's Health*. 2016;18(94):1-10. <https://doi.org/10.1186/s12905-018-0607-z>. <https://biomedcentral.com/track/pdf/10.1186/s12905-018-0607-z>.
 33. Swidergall M, Khalaji M, Solis NV, Moyes DL, Drummond RA, Hube B, Lionakis MS, Murdoch C, Filler SG, and Naglik JR. Candidalysin is required for neutrophil recruitment and virulence during systemic *Candida albicans* infection. *JID*. 2019;220 (November 17):1477-1488. <https://doi.org/10.1093/infdis/jiz322>. <https://academic.oup.com/jid/article/220/9/1477/5546010>.
 34. Sabu S, Nayak DN, Nair S and Shetty R. Role of Papanicolaou smear in the diagnosis of pathologic flora in asymptomatic patients in rural health care set-up. *JCDR*. 2017;11(10): EC10-EC13, 2017. doi: 10.7860/JCDR/2017/25044.10733. https://jcd.net/article_fulltext.asp?issn=0973709x&year=2017&volume=11&issue=10&page=EC10&issn=0973-709x&id=10733.
 35. Nishimura K, Watanabe S, Hayashida R, Sugishima S, Iwasaka T, and Kaku T. Binucleated HeLa cells are formed by cytokinesis failure in starvation and keep the potential of proliferation. *Cytotechnology*. 2016;68(4):1123-1130. doi: 10.1007/s10616-015-9869-6. <https://www.ncbi.nlm.nih.gov/pubmed/25894790>.
 36. Liu Y, Cao C, Zhai P and Zhang Y. Biological characteristics of cervical precancerous cell proliferation. *Open Med*. 2019;14:362-368. <https://doi.org/10.1515/med-2019-0036>. <https://www.degruyter.com/view/med/2019/14/issue-1/med-2019-0036/med-2019-0036.xml>



This work is licensed under a Creative Commons Attribution.

The change of cell biometric and its nucleus on cervical-squamous-epithelial-cell with GA genotype of Fas-promoter-670 gene, high-risk human papillomavirus and Candida species infection: a case report

ORIGINALITY REPORT

18%
SIMILARITY INDEX

14%
INTERNET SOURCES

15%
PUBLICATIONS

5%
STUDENT PAPERS

PRIMARY SOURCES

1	www.researchgate.net Internet Source	2%
2	www.ncbi.nlm.nih.gov Internet Source	1%
3	www.science.gov Internet Source	1%
4	bmccancer.biomedcentral.com Internet Source	1%
5	www.spandidos-publications.com Internet Source	1%
6	David Tjahyadi, Edy Parwanto, Sisca Sisca, Endrico Xavierees et al. "Effects of low-dose filtered kretek cigarette smoke on bronchial smooth muscle in male Sprague-Dawley rats", <i>Universa Medicina</i> , 2023 Publication	1%

7	Internet Source	1 %
8	Submitted to Indian Institute of Science, Bangalore Student Paper	1 %
9	worldwidescience.org Internet Source	1 %
10	Joon Win Tan, Andrew Cheng, Tovi Vo, Chin Siew Lee, Cheng He, Bo Zhang. "Giant pulmonary artery aneurysm in a setting of Wegener's granulomatosis", Cardiovascular and Thoracic Open, 2015 Publication	1 %
11	www.mdpi.com Internet Source	1 %
12	zir.nsk.hr Internet Source	1 %
13	repository.unair.ac.id Internet Source	1 %
14	www.degruyter.com Internet Source	1 %
15	Lisa D. Burry, David R. Williamson, Marc M. Perreault, Louise Rose et al. "Utilisation des analgésiques, sédatifs, antipsychotiques et bloqueurs neuromusculaires dans les unités de soins intensifs canadiennes: étude	<1 %

observationnelle prospective, multicentrique",
Canadian Journal of Anesthesia/Journal
canadien d'anesthésie, 2014

Publication

16

Adane Bitew, Yeshiwork Abebaw.
"Vulvovaginal candidiasis: species distribution
of Candida and their antifungal susceptibility
pattern", BMC Women's Health, 2018

Publication

<1 %

17

Shing Cheng Tan, Mohd Pazudin Ismail,
Daniel Roza Duski, Nor Hayati Othman,
Ravindran Ankathil. "FAS c.-671A>G
polymorphism and cervical cancer risk: a
case-control study and meta-analysis",
Cancer Genetics, 2017

Publication

<1 %

18

subject.med.wanfangdata.com.cn

Internet Source

<1 %

19

Kiyotada Washiya, Makoto Motoi, Takako
Kobayashi, Haruhiko Yoshioka, Jun Watanabe.
"Significance of Binucleated Cells with
Compression in Atypical Squamous Cells of
Undetermined Significance", Acta Cytologica,
2013

Publication

<1 %

20

microbiologyjournal.org

Internet Source

<1 %

21 Padmapriya, S., E. Kirubakaran, and N. M. Elango. "Medical Image Classification using Hybrid classifier by Extending the Attributes", Indian Journal of Science and Technology, 2016.
Publication <1 %

22 Sadhana M. Gupta, Jayanti Mania-Pramanik. "RETRACTED ARTICLE: Molecular mechanisms in progression of HPV-associated cervical carcinogenesis", Journal of Biomedical Science, 2019
Publication <1 %

23 www.biomedcentral.com
Internet Source <1 %

24 biblio.ugent.be
Internet Source <1 %

25 Henu Kumar Verma, Batoul Farran, Lakkakula V.K.S. Bhaskar. "Immune response, inflammation pathway gene polymorphisms, and the risk of cervical cancer", Elsevier BV, 2021
Publication <1 %

26 prion.systemsbiology.net
Internet Source <1 %

Exclude quotes ☒ On

Exclude matches ☐ < 10 words

Exclude bibliography ☐ On

The change of cell biometric and its nucleus on cervical-squamous-epithelial-cell with GA genotype of Fas-promoter-670 gene, high-risk human papillomavirus and Candida species infection: a case report

GRADEMARK REPORT

FINAL GRADE

GENERAL COMMENTS

/0

PAGE 1

PAGE 2

PAGE 3

PAGE 4

PAGE 5

PAGE 6

PAGE 7

PAGE 8

PAGE 9